



Support the Fight to Protect the Big Sandy Valley from Lithium Mining

Submitted by: Darlene Wakayuta | Hualapai Tribal Transportation

SUPPORT THE FIGHT TO PROTECT THE BIG SANDY VALLEY FROM LITHIUM MINING

Spiritual Walk & Run

October 14-17, 2023



**Join the Protest Walk from
Lake Ha'vasu to Wikieup
or join them on the road**

Supported by Hualapai Tribal Council

Inside this issue:

General Information & Events	2
Employment	22
Education & Training	23
Health & Safety	24
Community Messages	34
HIP Applications	42

Special points of interest:

- Hualapai Master Plan Update Committee will be meeting at 5:00 PM on Tuesday, October 3rd, at the 4H Building
- Hualapai Tribal Court Public Notice (pg 2)
- Gud U:k Hualapai Memorial Gathering (pg. 4)
- Housing Improvement Program (HIP) Information (pg 12)
- Housing COVID-19 Homeowner Assistance (pg 12)
- HSDPI Walk.O.Ween Event (pg. 24)
- Senior Services Chimney Pipe Cleaning (pg. 26)
- Say Boo to the Flu—Flu Pod (pg. 27)
- Car Seat Check Event (pg. 29)
- Hualapai Fire & EMS Smoke Alarm Program (pg. 30)

IN THE HUALAPAI TRIBAL COURT
HUALAPAI RESERVATION, STATE OF ARIZONA

HUALAPAI NATION,

PLAINTIFF,
VS.

XAVIER HAMIDREEK,

DEFENDANT

Case No. 2023-SA-004

NOTICE OF HEARING

TO: XAVIER HAMIDREEK, , PEACH SPRINGS, AZ 86434

You are hereby notified that on the 9th day of October, 2023 at the hour of 10:00 AM, the court will hold an **EXCLUSION HEARING** In the above-entitled cause.

You are further notified that it is your right to be represented by Legal counsel at your own expense.

YOU MAY ENTER THE BOUNDARIES OF THE RESERVATION ONLY ON October 9, 2023 NO MORE THAN 30 MINUTES PRIOR TO YOUR COURT HEARING AT 10:00 AM AND PROCEED DIRECTLY TO THE HUALAPAI TRIBAL COURT BUILDING. THIS ENTRY IS ONLY FOR THE PURPOSE OF ATTENDING THE SCHEDULED COURT HEARING. Pursuant to Hualapai Law and Order Code Sec. 9.4.

Your failure to appear at the above mentioned date, time, and place will result in a Default Judgment entered against you and the Petitioner will be awarded the contents of his/her petition.

DATED THIS 7th day of September, 2023


Clerk of Court

VERIFICATION OF SERVICE:

SERVED TO: GAMYU NEWSLETTER VIA EMAIL

SERVED BY: T.SHONGO

DATE/TIME: 9/7/23 AT 3:30P.M.



Hualapai Tribal Forestry & Wildland Fire Management

P.O. Box 299 • Peach Springs, Arizona 86434 • 928-769-2312

Community Announcement

The weather is changing and winter is fast approaching. This is just a friendly reminder to stop by at Forestry and get your wood cutting permits. Whether you are in wood sales or just cutting for personal use. We can assist you with any questions or concerns that you may have.



If you do have questions or concerns you can reach out to the Forestry and WFM Department at (928) 769-2312.

Thank you.

2023 Performer Group Leader Meetings ✧ Next Meeting: Tuesday, October 24th
Submitted by: Lana Keller-Robinett | Grand Canyon Resort Corporation

2023 PERFORMER GROUP LEADER MEETINGS

All Meetings at Hualapai Lodge, Upstairs Conference Room

~~Tue. 03/21 @ 8:30 a.m.~~

~~Tue. 04/18 @ 8:30 a.m.~~

~~Tue. 05/23 @ 8:30 a.m.~~

~~Tue. 06/20 @ 8:30 a.m.~~

~~Tue. 07/18 @ 8:30 a.m.~~

~~Tue. 08/22 @ 8:30 a.m.~~

~~Tue. 09/19 @ 8:30 a.m.~~

Tue. 10/24 @ 8:30 a.m.

Tue. 11/21 @ 8:30 a.m.

Tue. 12/19 @ 8:30 a.m.

**Announcements will be made on KWLP & in Gamyu.
Subject to change and you will be notified ASAP.**

Tentative Agenda

Tentative Agenda



GUD U:k
HUALAPAI MEMORIAL GATHERING
SATURDAY, NOVEMBER 4, 2023

- | | |
|----------|--|
| 7:00 AM | SUNRISE BLESSING
VETERANS—FLAG RAISING
(AT POW WOW GROUNDS BEHIND MULTI-PURPOSE BUILDING) |
| 8:00 AM | BREAKFAST AT MULTI-PURPOSE BUILDING |
| 9:00 AM | SET UP DISPLAYS |
| 10:00 AM | GREETINGS, EXPECTATIONS EXPLANATIONS, INTRODUCTIONS & ANNOUNCEMENTS |
| 10:30 AM | SINGING & DANCING AT POW WOW GROUNDS |
| 3:00 PM | DINNER—POTLUCK |
| 4:00 PM | GET READY TO BURN RAMADA
ALL FAMILIES MAY TAKE HEADSTONES & FLOWERS TO CEMETERY |
| 5:30 PM | SUNSET |

Final Memorial Potluck Meeting
Wednesday, October 11, 2023 at the Multi-Purpose Building
5:30PM - 8:00PM

Contact Lucille Watahomigie for any questions or concerns at (928) 769-0095



HUALAPAI RECREATION
PRESENTS

FALL SOCIAL GATHERING

SATURDAY NOVEMBER 4, 2023

2:00 PM

Hualapai Tribal Gym

All Singers & Dancers Welcome!

Information call
928-769-2652

Buck-N-Doe 4-H Club ✦ 2023 Mohave County Fair

Submitted by: Rosemary Sullivan | Buck-N-Doe 4-H Club

Buck-N-Doe 4-H Club

Rosemary Sullivan, Key Leader

PO Box 355, Peach Springs, AZ 86434 928.727.1286

2023 Mohave County Fair

This 2022-2023 4-H year marked the 30th Anniversary for the Buck-N-Doe 4-H Club! Thank you to the community and everyone that continue to support our club members & encouraged our members with their projects this past year and during the fair. We have eighteen (18) members and of those members eleven (11) were enrolled in small stock or live-stock events (1- Rabbit, 4 - Swine, 5 - Beef and 3 Sheep). I know that doesn't add to 11, but 2 members had 2 projects each. Our livestock project members were eligible for the Intertribal Agriculture Council Food for Families Program that offers competitive 2023 Add-On Livestock Premiums and Processing Coupons for members that will be completing their 4-H year at the local county fair. Members that received 2023 Add-On Livestock Premiums were: Secret Benson, Talicyn Lewis, Teagin Lewis, Josiah Uqualla, Michael Uqualla, Gracie Uqualla, Malachi Uqualla, Marklen Walema and Alyssa Montana.

Our fair week started on Sunday, 9/10/23, at our last club meeting for the year. The members and families helped put together a Club Exhibit fair entry that showcased our 30th Anniversary year with pictures of past 4-H members, families and leaders. Also today, members could take general project entries down to the Fairgrounds 4-H/FFA exhibit hall. Monday, 9/11/23, was the last day members completed entries could be accepted at the 4-H Exhibit Hall and they helped put up our Club Exhibit. Wednesday, 9/13/23, was a super busy day for the 4hers and their families. This is when all our small stock, livestock and equipment were hauled to the fairgrounds in Kingman, Arizona. All the members set up their stall areas and sites located at the fairgrounds and barn area by the arena. Official Fair weights were done that night starting at 6PM. Livestock: Market Steers - 4 of the 5 made minimum weight of 950 pounds, with one prospect under 950; Market Swine – none of the 4 met minimum weight of 215 pounds - will be listed as Prospect; Market Lamb – All three (3) lambs met weight limit of 100 pounds or higher; Small Stock- Rabbit - met minimum 8# limit. Official weights are important because these weights will determine if your project will be able to go to auction. For those not meeting the minimum weight limits, these members will do the showmanship events, but will now have to find a private buyer after the auction is over.

The Mohave County Fair officially opened on Thursday, 9/14/2023 at 10am. All our livestock and small stock stalls had to be decorated and clean when the fair opened. Our club assignments today included covering the 4-H/FFA Exhibit Hall from Noon to 3PM, then at 3PM they set up the arena for the Goat Show. Our first event began with our Market Swine Showmanship event. This event focuses on the members and how well they show their livestock. Our first event was **Senior Showmanship**, we didn't have any from our club, winners for Grand Champion - Gracie Forsee and Reserve Champion - Brooke Forsee. In the **Intermediate Showmanship** event members: **Josiah Uqualla, Michael Uqualla, Secret Benson and Talicyn Lewis** competed. Talicyn Lewis made it to the call back round and received a Blue ribbon, with Colter Hamilton - Grand Champion and Westyn Knowles - Reserve Champion. We didn't have members compete in the **Junior Showmanship** - winners were Tanner McGuire - Grand Champion and Brooklyn Jarquin - Reserve Champion.

After showmanship, the focus is now on the livestock and is called Market Conformation with classes broken down by weight. All of our market pigs were purchased from a Mohave County Breeder and were very small, had a hard time gaining weight and all were placed in the Prospect Class. What this means is that these club members pigs will not be in the Auction on Saturday and they will have to find a private buyer or take the pigs home.

We also take part in Herdsmanship during the Fair and are judged for always having member(s) available at our live-stock exhibits from 10AM to 7PM Thursday & Friday and 10AM to 5PM on Saturday, as well as other arena assignments given to our club during the fair.

Friday events started early with our Small Animal Showmanship and Market Classes beginning at 10AM. Our club had one (1) members, **Cherish Manakaja**, received a White Ribbon in the Rabbit Showmanship event and a 9th Red for Roaster/Stewer rabbit conformation.

Our next event on Friday (9/16/22) started at 4PM with Senior Sheep Showmanship with our only Senior member, **Teagin Lewis**, Gracie Forsee - Grand Champion and Gavin Campbell - Reserve Champion. In the **Intermediate** Sheep show, **Talicyn Lewis** placed 3rd, with Elmer Hambrick - Grand Champion and Lucas McMillan - Reserve Champion. In the **Junior Showmanship** class: **Shania Walema won the Jr. Reserve Champion Buckle (her 1st year in this project)** and Kayleigh Prentice - Grand Champion buckle. They all did an excellent job showing and learning from the judge on how to work with their lambs. After the showmanship, conformation started with the Lightweight lambs: Shania Walema's lamb was placed as 1st White; Medium Weight lambs: Teagin Lewis-2nd White and Talicyn Lewis – 1st White. I want to thank Kristy McReynolds (for taking the time to help shear and prep these lambs for showmanship) & to Cleve & Teola Lewis for hauling the trailer (for these lambs to her house) the weekend prior to the Fair. That Saturday (9/10/22) was also our Fairgrounds clean-up day and counted as a County event. Attending a county event is a requirement for members to attend in order to show at the Fair.

The last Friday event of the day was our Beef Show and Conformation events that started at 7PM with our Senior **Beef Showman: Malachi Uqualla, Gracie Uqualla and Teagin Lewis**. The Grand Champion was Gracie Forsee and Reserve Champion - Charlie Kate. In the **Intermediate Class: Marklen Walema & Alyssa Montana** competed, Faith Campa won Grand Champion and Jody Vincent - Reserve Champion. In the **Junior Class**: no members in this class, Lincoln Barkhurst - Grand Champion and Bronson Campa - Reserve Champion. **Market Beef Conformation** began with the **Lightweight class: Alyssa Montana - 2nd White and Teagin Lewis - 1st White**, judge said our steers had no look or presence or show appeal, but they were good meat steers. **Medium Weight Class: Malachi Uqualla – 2nd Red**. There were no Heavy Weight steers from our club. The Grand Champion Market Steer went to Shelby Vincent's Heavy Wt. Steer and Reserve Champion went to Lincoln Barker's Medium Wt. Steer. Teagin Lewis was in the running for the Top Placing Mohave County Fed & Bred Award, but lost out to Lucas McMillan.

Saturday, 9/17/22, was another busy day. Our club also had members/family covering the livestock area 10AM to 5PM today, plus they had an Auction Sellers meeting at 2:30PM and Parade of Champions at 6PM, with the Auction starting after this. Today I had the opportunity to write down all our club exhibits and awards:

Secret Benson – Breads: Biscuits-Red; Pretzels - Blue, Purple, Best of Show, **"Intermediate Reserve Champion Nutritional Science" plaque**. Arts & Crafts: Jewelry - Blue. Food Preservation: Jelly - Blue.

Lawrence Bravo - Welding: Fire Pit - Red.

Talicyn Lewis - Cake Decorating: Blue, Purple, Best of Class, **"Intermediate Grand Champion Specialty foods" plaque**; Quilting: Jelly Roll Quilt - Blue, **"Intermediate Grand Champion Sewing & Textiles" plaque**; Breads: Doughnuts-White.

Teagin Lewis – Arts & Crafts: Woodburning, Blue, Purple-Best of Class, **"SR Grand Champion Arts & Crafts" plaque**.

Auria Siyuja – Arts & Crafts: Acrylic Painting, Blue; Sewing: Halloween Bag, Red; 9-Patch Pillow - Blue, Purple, Best of Class, **"JR Grand Champion Sewing & Textiles" plaque**.

Kailey Siyuja – Photography: Landscape - Blue, Other (sky photo) - Blue, Other photos x 2-White; Arts & Crafts: Acrylic Painting - Red.

Leilani Siyuja – Photography: Landscape - White, Other (misc.) x 3 - White; Landscape - Blue, Purple, Best of Class, **"SR Reserve Champion Photography Exhibit" plaque**. Sewing: Jelly Roll Quilt, Blue, Purple, Best of Class **"SR Grand Champion Sewing & Textiles"**.

Gracie Uqualla – *Ranch Hands 4-H/Shooting Sports: SR Reserve Champion Shotgun.*

Josiah Uqualla – Photography: Landscape Photo – Blue, Purple, Best of Class **"Intermediate Grand Champion Photography Exhibit" plaque**, Other (sky) photo – Red, Building Photo - White; Food Preservation: Pomegranate Jelly – Blue. *Ranch Hands 4-H Club/Shooting Sports: INT Reserve Champion Shotgun.*

Malachi Uqualla – Welding: Fire pit - Red; **Beef: Best Average Daily Gain plaque**. *Ranch Hands 4-H Club/Shooting Sports: Shotgun Choke Pattern Poster – Blue, Purple, Best of Class "SR Grand Champion Shooting Sports" plaque; SR Grand Champion Shotgun.*

Michael Uqualla - Breads: Soft Pretzels - Blue; Food Preservation: Pizza Sauce - Blue, Purple, Best of Class; *Ranch Hands 4-H/Shooting Sports: INT Grand Champion Shotgun.*

Lena Montana - Arts & Crafts: Pencil Drawing-Blue, Purple, Best of Class.

Shealtiel Montana - Arts & Crafts: Acrylic Painting- White; Photography: People Photo-White.

It was a busy Saturday for the members preparing for the Parade of Champions and getting the animals ready for Auction. Our members did a Great job on their exhibits, we had ten (10) members walk in the Parade of Champions:

Secret Benson: Intermediate Reserve Champion Nutritional Science

Talicyn Lewis: Intermediate Grand Champion Specialty Foods and Intermediate Grand Champion Sewing & Textiles

Teagin Lewis: SR Grand Champion Arts & Crafts

Auria Siyuja: JR Grand Champion Sewing & Textiles

Leilani Siyuja: SR Grand Champion Sewing & Textiles; SR Reserve Champion Photography Exhibit

Gracie Uqualla: SR Reserve Champion Shotgun

Malachi Uqualla: SR Grand Champion Shooting Sports; SR Grand Champion Shotgun;
Beef- Best Average Daily Gain plaque.

Josiah Uqualla: Intermediate Grand Champion Photography Exhibit; INT Reserve Champion Shotgun.

Michael Uqualla: Intermediate Grand Champion Shotgun

Shania Walema: JR Reserve Champion Sheep Showman, buckle.

The Final event for our members is the 4-H/FFA Auction held Saturday, 9/17/22 @ 6PM. This was a long event for the one hundred (100) small stock/livestock eligible for this event. All of our members sold at the very end of the Auction and I want to thank all the buyers that stayed and bid on their livestock. A special thank you to the Hualapai Tribal Council members (Blake Watahomigie, Stewart Crozier, Cheyenne Majenty & Earlene Havatone) who took the time to come to the Auction. Buyers for our 4-H members included:

Honga Family (Market Lamb - Shania Walema)

Hualapai Tribe (Market Steers - Teagin Lewis, Malachi Uqualla, Alyssa Montana & Gracie Uqualla; Rabbit Stewer - Cherish Manakaja)

14 Cattle Company (Market Lamb - Talicyn Lewis)

Herbert & Rosemary Sullivan (Grand Champion Market Rabbit Stewer in Resale)

Prospect Livestock:

Mohave Meat Company (Prospect Swine - Josiah Uqualla & Michael Uqualla)

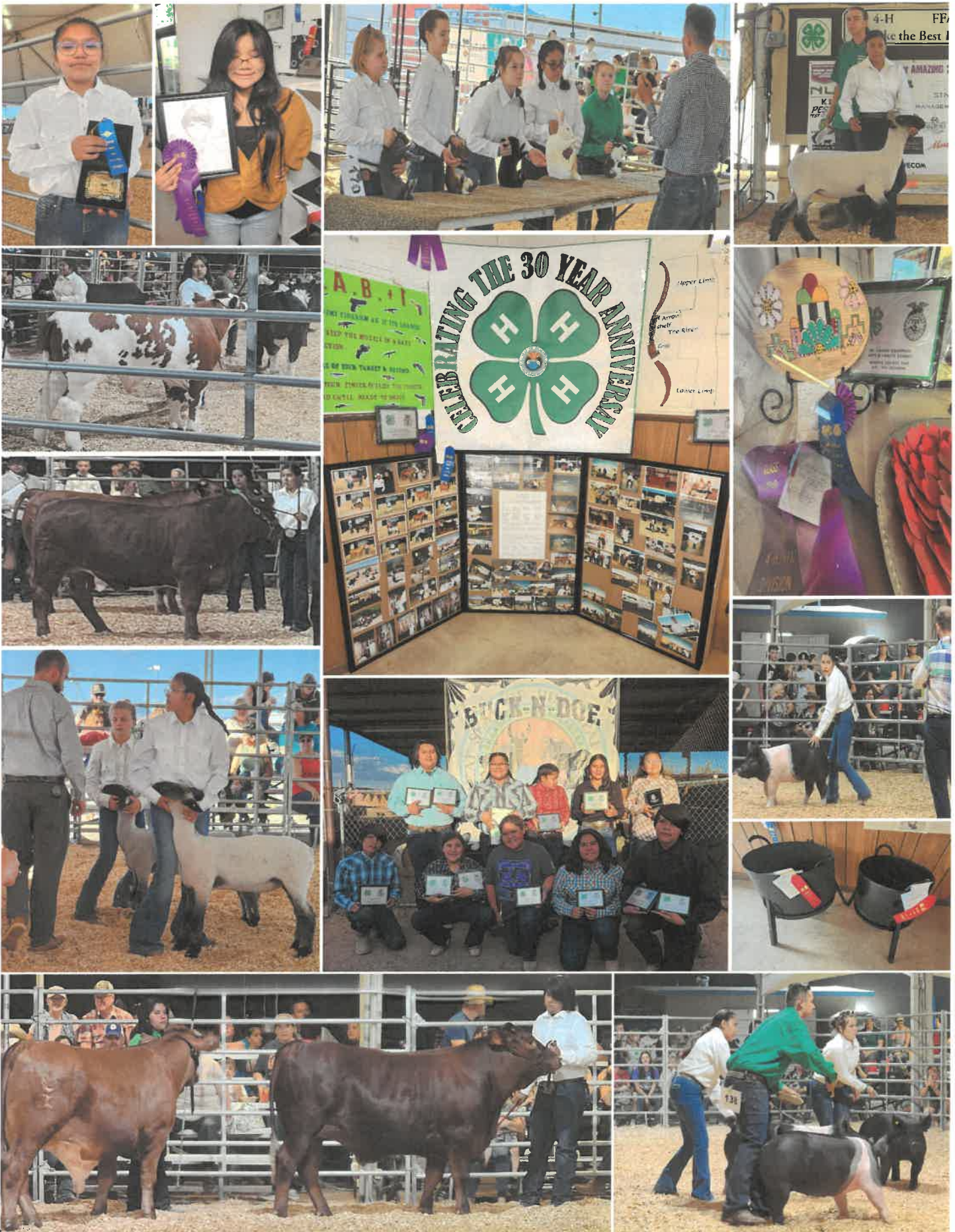
Annette Bravo (Prospect Swine - Secret Benson)

Herbert & Rosemary Sullivan (Prospect Swine - Talicyn Lewis)

Tobie & Jamie Arney (Prospect Steer - Marklen Walema)

Our club year starts 10/1/2023, we invite children ages 5-19 are welcome to join (Children need to be 5 years old before 12/31/2023 and 18 before 12/21/23). Enrollment is done online only, so go to the Mohave County 4-H website and click on JOIN 4-H, instructions on how to enroll will come up. If you need help enrolling your child in 4-H, you can call the Mohave County Extension Office @ (928) 753-3788 for assistance. Also, we are always looking for Volunteer Leaders for our club projects, if you are interested go to the same website for enrollment and click on Leader information. Locally we have Elisabeth Alden, FRTEP and Teresa Honga, FRTEP Assistant located at the 4-H Facility offices in Peach Springs and our local club leaders. You can call my phone # (928) 727-1286 or Teola Lewis, Co-Key Leader, @ (928) 769-1909 for further information. Mah, hankgyu.

Rosemary Sullivan, Key Leader, Buck-N-Doe 4-H Club



Gracie Uqualla ✦ National Shooting Sports Competition

Submitted by: Rosemary Sullivan | Buck-N-Doe 4-H Club

Highlights from My Nationals Trip

My mom and I drove to Grand Island, Nebraska on Friday, June 23, 2023 and arrived to our destination on Saturday evening. I met the others from the Arizona team on Sunday afternoon during check in.

Picture #1 -. I made it to the Nationals Shooting Sports Competition!

Monday's schedule included team pictures, opening ceremonies, a mandatory meeting where we met the 4 others on our squad (we would be shooting all the events with this group, and the rule was that each squad had 5 competitors from all different states so I didn't get to shoot with anyone I knew!) and practice for Tuesday's event.

Picture #2 - This is the Arizona team. There were 24 competitors from Arizona! Picture #3 - shows the Arizona group getting organized to get the picture of the team taken.

During the introductions at the opening ceremonies we were told that there were over 700 competitors from 40 states! This was the biggest event to date! Each state was introduced as they walked in front of the stage. We looked sharp in our Arizona jerseys! (We got several compliments on our jerseys during the week :D

Tuesday morning brought our first competition, sporting clays. Picture #4 shows me shooting at a sporting clays station. This was a tough course! Tuesday evening I attended the social. This was a time to get to know others and also a time to trade pins. Each competitor had pins from their state and we were able to trade and collect pins from other states. I was able to collect 20 of the 40 states represented.

Wednesday morning we shot skeet. Picture #5 shows me and most of my squad watching the 5th person of our squad shooting. This ended up being my best score. In the evening we attended the awards ceremony for the Tuesday events.

Thursday was the final event for me - trap. Picture #5 shows me shooting trap. It was a bit windy while we were shooting. Thursday afternoon, after all our events were wrapped up, the Arizona team coaches treated us to a water park. It was so fun! After the awards ceremony Thursday evening we were treated to the water park again by the Nationals coordinators!

Friday morning was the final awards ceremony. Then my mom and I headed back home.

I had a great experience. I didn't do as well as I hoped but it sure was an amazing experience and I will forever remember this time.

I thank you so much for helping me to be able to get to this event. Your support and donation made this experience possible!

Gratefully,





Gracie is a member of Buck-N-Doe 4-H Club, but also a member of Ranch Hands 4-H Club for Shooting Sports. This year she qualified in shotgun for the National Shooting Sports Competition held at Grand Island , Nebraska (June 23 - July 1, 2023)



*******ATTENTION*******

Now Accepting

Housing Improvement Program (HIP) Applications

The Housing Improvement Program is a home repair, renovation and replacement grant program administered by the Bureau of Indian Affairs (BIA) and federally-recognized Indian Tribes for American Indians and Alaska Native individuals and families who have no immediate resource for standard housing. To be eligible for HIP assistance, you must be a member of a federally recognized American Indian tribe or be an Alaska Native; live in an approved tribal service area; have an income that does not exceed 125% of the U.S. Department of Health and Human Services Poverty Guidelines; have present housing that is substandard, as defined in the regulations 25 CFR, Part 256; have no other resource for housing assistance; have not received HIP assistance after October 1, 1986 for repairs, renovation, replacement or housing, or down payment assistance; and have not acquired your present housing through a federally sponsored housing program that includes such housing assistance. Interested applicants should contact Michelle Zephier for an Application Package containing the application, guidelines, and required supporting documentation necessary in order to qualify for eligibility. Complete applications and all supporting documentation is due by **November 29, 2023**.

Contact Persons:

Michelle Zephier, Hualapai Planning Dept.

Office Phone: 928-769-1310

Fax: 928-769-1377

Western Region (BIA) - Nancy Jones,

Office Phone: (602) 379-3083;

Fax: (602) 379-4006

Hualapai Housing Department COVID-19 ♦ Homeowner Assistance Fund Policy (page 13)

Submitted by: Elaina Lee | Hualapai Housing Department

This is limited funding, first come, first serve with complete application.

Request for renovation, addition and HVAC must have 3 quotes from a licensed and insured contractor. Must submit a letter of request for type of assistance requesting with attestation describing your financial hardship associated with coronavirus pandemic after January 21, 2020 along with supportive documentation (for example: job loss, reduction in income, increased cost, due to healthcare or the need to care for a family member).



HUALAPAI HOUSING DEPARTMENT COVID-19 HOMEOWNER ASSISTANCE FUND POLICY

SECTION I. PURPOSE

- A. This Homeowner Assistance Fund Policy ("Policy") shall govern the Hualapai Housing Department ("HHD") Homeowner Assistance Fund ("HAF Program") and the expenditure and management of the Homeowner Assistance Funds ("HAF Program Funds") received from the U.S. Treasury pursuant to Section 3206 of the American Rescue Plan Act of 2021, P.L. No. 117-2 (March 11, 2021).**
- B. The first case of COVID-19 was detected in the United States on January 21, 2020. The Secretary of the U.S. Department of Health and Human Services declared the public health emergency for COVID-19 on January 31, 2020. An emergency declaration was issued on March 13, 2020, pursuant to section 501(b) of the Robert T. Stafford Disaster Relief and Emergency Assistance Act, 42 U.S.C. 5191(b).**
- C. Notwithstanding any provision set forth in any other HHD Policy, receipt of assistance from the HAF Program established under this Policy shall not make the Recipient or Recipient family eligible or ineligible for assistance under any of the regular HHD policies.**
- D. Nothing in this Policy shall be construed to invalidate any otherwise legitimate grounds for eviction.**
- E. Assistance to be provided under the HAF Program is subject to availability of funds. No applicant or household determined to be eligible is entitled to or has a property right to receive funding under the HAF Program. When funding for the HAF Program is fully expended, the HAF Program will terminate. HHD may terminate this Program at any time.**
- F. This Policy is based, and the HAF Program will be carried out, in reliance upon the April 14, 2021, guidance document from the Department of Treasury (entitled "Homeowner Assistance Fund Guidance"), along with any future modification, clarification, or supplementation which Treasury may provide. This Policy and the administration of the HAF Program will be subject to change if and when additional guidance is provided.**

SECTION II. DEFINITIONS

General: The following definitions shall apply to this HAF Program Policy.

A. "100% of the area median income" for a household means two times the income limit for very low-income families, for the relevant household size, as published by the Department of Housing and Urban Development (HUD) in accordance with 42 U.S.C. 1437a(b)(2) for purposes of the HAF Program.

B. "100% of the median income for the United States" means the median income of the United States, as published by HUD.

C. "150% of the area median income" for a household means three times the income limit for very low-income families, for the relevant household size, as published by HUD in accordance with 42 U.S.C. 1437a(b)(2) for purposes of the HAF Program.

D. "Applicant" means a homeowner who applies for financial assistance pursuant to this HAF Program Policy.

E. "HHD" means the Hualapai Housing Department.

F. "Conforming loan limit" means the applicable limitation governing the maximum original principal obligation of a mortgage secured by a single-family residence, a mortgage by a 2-family residence, a mortgage secured by a 3-family residence, or a mortgage secured by a 4-family residence, as determined and adjusted annually under section 302(b)(2) of the Federal Mortgage Association Charter Act (12 U.S.C. § 1717(b)(2) and section 305(a)(2) of the Federal Home Loan Mortgage Corporation Act (12 U.S.C. § 1454(a)(2)).

G. "COVID-19" refers to the viral disease caused by the novel coronavirus known as SARSCoV-2.

H. "Dwelling" means any building, structure, or portion thereof that is occupied as, or designed or intended for occupancy as, a residence by one or more individuals.

I. "Eligible entity" means (1) a state, (2), the Department of Hawaiian Home Lands, (3) each Indian tribe (or, if applicable, the tribally designated housing entity of an Indian tribe) that was eligible for a grant under Title I of the Native American Housing Assistance and Self-Determination Act of 1996 (25 U.S.C. § 4111 *et seq.*) for fiscal year 2020, and (4) any Indian tribe that opted out of receiving a grant allocation under the Native American Housing Block Grants program formula in fiscal year 2020.

J. "Eligible Homeowner" means a homeowner that meets the eligibility requirements provided for in this Policy.

K. "Financial hardship" means a material reduction in income or material increase in living expenses associated with the coronavirus pandemic that has created or increased a risk of Homeowner delinquency or default, foreclosure, loss of utilities or home energy services or displacement for a homeowner.

L. "Indian Tribe" means a tribe that is a federally recognized tribe or a "State recognized tribe" as those terms are defined in NAHASDA, 25 U.S.C. 4103(13).

M. "NAHASDA" means the Native American Housing Assistance and Self-Determination Act passed by the U.S. Congress in 1996.

N. "Secretary" means the Secretary of the U.S. Department of Treasury, except where otherwise indicated.

O. "Socially Disadvantaged Individuals" means those who have been subject to racial or ethnic prejudice or cultural bias because of their identity as a member of a group without regard to their individual qualities. The social disadvantage must stem from circumstances beyond their control. There is a rebuttable presumption that the following individuals are socially disadvantaged: Black Americans, Hispanic Americans, Native Americans, and Asian Americans and Pacific Islanders. In addition, an individual may be determined to be a socially disadvantaged individual in accordance with the procedures set forth in 13 C.F.R. § 124.103(c) or (d).

P. "Treasury" means the U.S. Department of Treasury.

Q. "Tribal Member" means a member of the Hualapai Tribal member.

R. "Tribe" means the Hualapai Tribe.

SECTION III. HOMEOWNER ASSISTANCE OVERVIEW

A. HHD shall only use the HAF Program Funds to provide financial assistance to Eligible Homeowners to use for qualified expenses for the uses set forth herein and in accordance with the terms of this Policy.

1. Application. To participate in the HAF Program, a Homeowner must first submit a complete, written Application to HHD. This Application must include all information required by HHD, as described herein.

2. Participation. If an Applicant is approved for participation in the HAF Program, they must then submit information and supporting documentation each month for which they seek continued HAF Program Funds, unless such payments are to be provided for a 3-month period, for which the Applicant must provide such information for the 3-month period.

B. Qualified Expenses

1. HAF Program Funds may only be used for the following types of qualified expenses that are for the purpose of Homeowners Rehabilitation/Addition to prevent overcrowding and Heating, Ventilation and Air Conditioning (HVAC) after January 21, 2020:

a. Payment assistance for:

- 1. Homeowner's arrears**
- 2. Homeowner's Rehabilitation/Addition**
- 3. Heating, Ventilation and Air Conditioning (HVAC)**
- 4. Mortgage Payment Assistance.**
 - a) Homeowners Insurance.**
 - b) Hoa Fees or Liens.**
 - c) Delinquent Property Taxes.**
- 5. Homeowner's Internet Payment Assistance**

b. Counseling or educational efforts by housing counseling agencies approved by HUD, or legal services, targeted to households eligible to be served with funding from the HAF Program related to foreclosure prevention or displacement, in an aggregate amount up to 5% of the funding from the HAF Program received by HHD;

2. Duplication of Assistance. An Eligible Homeowner that occupies a Dwelling for which that Homeowner is receiving or has already received other federal assistance may receive HAF Program assistance, provided that HAF Program Funds are not applied to costs that have been or will be reimbursed under any other federal assistance. To the extent feasible, HHD will ensure that any financial assistance provided to an Eligible Homeowner pursuant to the HAF Program Funds is not duplicative of any other Federally funded assistance provided to such Homeowner.

a. If an Eligible Homeowner receives homeowner assistance other than through the HAF Program, the HAF Program Funds may only be used to pay for costs that are not paid for by the other homeowner assistance. When providing HAF Program Funds, HHD must review the Eligible Homeowner's income and sources of assistance to confirm that the HAF Program Funds do not duplicate any other assistance, including federal, state, and local assistance provided for the same costs.

SECTION IV. ELIGIBILITY

A. Eligibility Requirements. In order to be eligible to apply for the HAF Program, at the time the Applicant applies to the HAF Program, the Applicant must meet the following eligibility requirements:

1. The Applicant is a homeowner who has experienced a financial hardship after January 21, 2020 and have an income equal to or less than 150% of the area median income.

2. The Applicant attests to the nature of the financial hardship experienced after January 21, 2020. The attestation must describe the nature of the financial hardship (for example, job loss, reduction in income, or increased costs due to healthcare or the need to care for a family member).

3. Hualapai Tribal members must be residing on or off the Hualapai Indian Reservation or off the reservation within the state of Arizona. A homeowners home must be primary home and occupied residence of Arizona.

B. HAF Program Funds received by an Applicant must only be used for qualified expenses set forth in this Policy that are related to the Dwelling that is used as the homeowner's primary residence.

C. Income Determination. In determining the Income of a household for purposes of determining such household's eligibility for assistance from the HAF Program Funds, HHD may use HUD's definition of "annual income" in 24 C.F.R. § 5.609 or use adjusted gross income as defined for purposes of reporting on Internal Revenue Service (IRS) Form 1040 series for individual federal annual income tax purposes.

1. Documentation of Income Determination: Applicant must provide sufficient information to HHD to enable HHD to have a reasonable basis under the circumstances for purposes of determining if the income eligibility requirements in (A) above are met. Two approaches for income verification are permissible: (1) the household may provide a written attestation as to household income together with supporting documentation such as paystubs, W-2s or other wage statements, IRS Form 1099s, tax filings, depository institution statements demonstrating regular income, or an attestation from an employer; or (2) the household may provide a written attestation as to household income and HHD may use a reasonable fact-specific proxy for household income, such as reliance on data regarding average incomes in the household's geographic area. In implementing the HAF Program, HHD will avoid establishing documentation requirements that are likely to be barriers to participation for eligible households, including those with irregular incomes such as from a small business.

2. Waiver or Exception to Documentation Requirement: HHD may provide a waiver or exception to documentation of income requirement as reasonably necessary to accommodate extenuating circumstances, such as disabilities, practical challenges related to the pandemic, or a lack of technological access by homeowners; in these cases, HHD is still responsible for making the required determination regarding household income and documenting that determination.

SECTION V. APPLICATIONS FOR HAF PROGRAM

A. Participation Applications: To participate in the HAF Program, an Applicant must first submit a complete, written Application on the forms provided by HHD, which are attached as Exhibits to this Policy. All information required to be on the forms must be completed, or the Application will be returned. Applications for the HAF Program must be submitted to HHD by mailing or dropping off the Applications to the following address:

Hualapai Housing Department
Attn. COVID-19 HAF Program
P.O. Box 130
Peach Springs, Arizona 86434

or submit to elaina.lee@hualapai-nsn.gov or housing@hualapai-nsn.gov

The Application must include the following information and supporting documentation:

1. Applicant and Household Information. Homeowners must submit applicant and household information as included in the Application Form. This form is attached as an Exhibit.

2. Financial Hardship. Homeowners must attest that they experienced financial hardship after January 21, 2020. The attestation must describe the nature of the financial hardship (for example, job loss, reduction in income, or increased costs due to healthcare or the need to care for a family member). This form is attached as an Exhibit.

3. Income. Homeowners must have incomes equal to or less than 150% of the area median income.

4. Release of Information. This form is attached as an Exhibit.

B. Notification of Change of Eligibility. Applicants are required to notify HHD in writing immediately whenever any determining factor of eligibility changes. This includes, but is not limited to:

1. No longer experiencing a financial hardship; or

2. Have an income that is equal to or less than 150% of the area median income.

C. Falsification and Investigation

1. If it is discovered that an Applicant has falsified his or her Application, or otherwise abused the HAF Program, or if an Eligible Homeowner fails to notify HHD of changes to eligibility, the homeowner will be subject to penalties. Penalties will include ineligibility for continued participation in the HAF Program and repayment of the value of any benefit for which they were not eligible to receive. HHD shall have the right to seek such repayment through garnishment of the Recipient's per capita distribution or wages, if any.
2. HHD shall retain the right to conduct a follow-up investigation into any self-attestations submitted or regarding any other documentation, at its own discretion, if it determines that the reliability or accuracy of the information provided is in doubt.

D. Application Review

1. The HHD staff member receiving the Application shall sign and date the Application when it is received at the HHD office.
2. **Preferences and Priorities.** Applications will be reviewed and processed as they are received. However, in anticipation of HHD receiving a substantial number of applications within a short period of time, with a finite amount of funding available, HHD shall review and process Applications for HAF Program Funds under this Policy according to the following order of preferences, and in accordance with the HAF Plan submitted to, and approved by, the Secretary.
 - A. Not less than 60% of amounts made available to HHD must be used for qualified expenses that assist Eligible Homeowners having incomes equal to or less than 100% of the area median income or equal to or less than 100% of the median income for the United States, whichever is greater, utilizing the following preferences:
 1. First preference will be given to socially disadvantaged Eligible Homeowners that have at least one family member (regardless of whether that member is an adult or head of household) who is a Tribal Member.
 - B. The remaining 40% of amounts made available to HHD will be prioritized to socially disadvantaged individuals utilizing the same preferences as set out in subsection (a), above.
3. **Approval of Applications.** HHD will notify Applicants in writing, within fourteen (14) days of HHD's receipt of the Application, of HHD's decision of whether the Applicant has been approved to receive HAF Program Funds.
4. **Denial of Application.** If upon initial review, HHD determines that the Applicant is not eligible or the request is outside of this Policy, or there are no longer any HAF Program

Funds available, HHD will notify the Applicant in writing of this determination, the applicable policies which support the determination, and the process of appeal (if allowed).

a. Process of Appeal. Any Applicant who is dissatisfied with a decision of HHD concerning eligibility of assistance, the level of benefit approved, or the type of services available, can appeal that decision to the Executive Director of HHD.

b. No Appeal. If the reason for the denial of the Application is that there are no longer any HAF Program Funds remaining, such denial is not subject to appeal.

Program Services:

1. Homeowners House Payment (Arrearages):

Brief Description : HAF will provide full or partial payment to homeowners unable to make full payments, owing to a continuing financial hardship resulting from the coronavirus pandemic. HAF funds may be used to reduce a homeowner's monthly loan payments for a period starting on 01-01-2020. HAF funds will only be used to supplement other loss-mitigation measures offered by the servicer or where HAF funds are necessary for the homeowner to qualify for other such loss-mitigation measures.

Maximum amount of assistance per homeowner: Each Homeowner will be eligible for up to \$2,000 through this program, apply only to the homeowner's primary residence. (The maximum amount of all combined program assistance granted by HHD through the HAF program elements will not exceed \$72,300 per homeowner.)

Homeowner eligibility criteria and documentation requirements: Same as General Eligibility Requirements, plus: HHD will make all funds for assistance available to households with annual household income that is at or below 150% of the Area Median Income, and 60% of these funds will be reserved and targeted for households that are at or below 100% of the Area Median Income. The following must apply:

- The HTM must be listed on the lease agreement/deed, and copies of these documents must be submitted.
- The HTM must provide a Tribal ID or verification of Hualapai Tribal enrollment.
- The HTM must provide copies of documents showing household income for all household members.
- The HTM must provide a statement of their present inability to resume homeownership payments, owing to unemployment, underemployment or other continuing hardship. Loan eligibility criteria specific to the program The HTM must provide a homeowner statement indicating delinquency and must be at least one month in arrearage.

2. Home Rehabilitation/Addition Assistance:

Brief Description : Provide funds to cover renovation, repairs or additions to the homeowner's primary residence as necessary to restore the property to habitable condition or to prevent overcrowding.

HAF funds may be used to pay the cost of renovation, repairs or additions to address property conditions or overcrowding, including pre-development costs, necessary architectural or engineering fees, construction oversight, or other costs incidental but necessary to the completion of the eligible scope of work.

Grantee may utilize HAF administrative funds to provide technical assistance to the homeowner (e.g. identifying necessary repair work).

Maximum amount of assistance per homeowner: Each Homeowner will be eligible for up to \$40,000 through this program, apply only to the homeowner's primary residence. (The maximum amount of all combined program assistance granted by HHD through the HAF program elements will not exceed \$72,300 per homeowner.)

Homeowner eligibility criteria and documentation requirements: Same as General Property Eligibility Criteria Across All Programs plus:

- Property will continue to be the applicant's owner-occupied primary residence once the repairs are made.
- Properties that have outstanding violations may receive assistance if corrections are addressed before funding or are included in the scope of work funded by the program.

Eligible Property Conditions:

- Housing deficiencies or conditions exist which may be hazardous to occupants/residents,
- Property has a code violation or other citation, or is in danger of being cited or condemned, without the necessary repair,
- Property is uninhabitable or condemned and the repair is necessary to make the home habitable, OR
- Home improvements are necessary to improve accessibility and help senior residents age in place.

The following must apply:

- The HTM must be listed on the mortgage and deed, and copies of these documents must be submitted.
- The HTM must provide a Tribal ID or verification of Hualapai Tribal enrollment.
- The HTM Member must provide copies of documents showing household income for all household members.

EMPLOYMENT OPPORTUNITIES

Grand Canyon Resort Corporation ♦ Current Job Postings Submitted by: Gina Hernandez | Grand Canyon Resort Corporation

Revised 9/25/2023

** For Quick Apply Visit Grandcanyonwest.com **

Current Job Postings for Grand Canyon Resort Corporation							
Administration	# of Positions	Pay Rate	Shift	Airport	# of Positions	Pay Rate	Shift
Human Resources Director	1	D.O.E.	Varies	Airport Manager	1	D.O.E/FT	Varies
Chief Of Executive Officer (CEO)	1	D.O.E.	Varies	Airport EMS/Firefighter	1	D.O.E/FT	Varies
Chief Operations Officer (COO)	1	D.O.E/FT	Mon-Fri	Airport Supervisor	1	D.O.E/FT	Varies
Chief Financial Officer (CFO)	1	D.O.E	Varies	Airport Operations Specialist	1	D.O.E/PT	Varies
Project Manager	1	D.O.E/FT	Varies	Transportation	# of Positions	Pay Rate	Shift
Accounting	# of Positions	Pay Rate	Shift	Transit Mechanic	1	D.O.E/FT	Varies
Accountant	1	D.O.E/FT	Mon-Fri	Transit CDL Driver	2	D.O.E/FT	Varies
Human Resources	# of Positions	Pay Rate	Shift	Security	# of Positions	Pay Rate	Shift
Sr. Human Resource Specialist- Recruiting	1	D.O.E/FT	Mon-Fri	OIC/ Lead	1	D.O.E/FT	Varies
Sr. HR Specialist- Training & Development	1	D.O.E/FT	Varies	Security Guard	1	D.O.E/FT	Varies
Marketing	# of Positions	Pay Rate	Shift	Security Guard	2	D.O.E/PT	Varies
Sales & Marketing Manager	1	D.O.E/FT	Varies	Security Supervisor	1	D.O.E/FT	Varies
Digital Market Manager	1	D.O.E/FT	Varies	Gift Shop/Tour Counter	# of Positions	Pay Rate	Shift
Call Center	# of Positions	Pay Rate	Shift	Cashier	1	D.O.E/FT	Varies
Supervisor	1	D.O.E/FT	Varies	Cashier	2	D.O.E/PT	Varies
Hualapai Lodge	# of Positions	Pay Rate	Shift	Concierge	1	D.O.E/FT	Varies
Hotel Operations Manager	1	D.O.E/FT	Varies	Tour Counter Supervisor	1	D.O.E/FT	Varies
Maintenance Tech	1	D.O.E/PT	Sat-Mon	Cash Room Clerk	1	D.O.E/FT	Varies
Room Attendant	1	D.O.E/PT	Varies	Gift Shop Supervisor	1	D.O.E/FT	Varies
Front Desk Agent	1	D.O.E/PT	Varies	Ambassadors	# of Positions	Pay Rate	Shift
Maintenance Tech	1	D.O.E/FT	Varies	Greeter	1	D.O.E/FT	Varies
Diamond Creek Restaurant	# of Positions	Pay Rate	Shift	Pontoon	# of Positions	Pay Rate	Shift
Supervisor	1	D.O.E/FT	Varies	Ops Manager	1	D.O.E/FT	Varies
Front of House	1	D.O.E/PT	Varies	Guide	2	D.O.E/Seasonal	Varies
Front of House	1	D.O.E/Seasonal	Varies	Skywalk	# of Positions	Pay Rate	Shift
Walapai Market	# of Positions	Pay Rate	Shift	Retail Cashier/Ticketing	3	D.O.E/FT	Varies
Operations Manager	1	D.O.E/FT	Varies	Photo Guide	2	D.O.E/FT	Varies
Utility	1	D.O.E/FT	Varies	Express Driver/CSR	1	D.O.E/PT	Varies
Hualapai River Runners	# of Positions	Pay Rate	Shift	Photo Guide	1	D.O.E/PT	Varies
Maintenance Supervisor	1	D.O.E/FT	Varies	Cash Room Clerk	1	D.O.E/FT	Varies
Small Engines Supervisor	1	D.O.E/FT	Varies	Express Driver/CSR	1	D.O.E/FT	Sun-Wed
Small Engines Mechanic	1	D.O.E/FT	Varies	Hualapai Point	# of Positions	Pay Rate	Shift
Passenger CDL Driver	1	D.O.E/Seasonal	Varies	Housekeeping	2	D.O.E/PT	Varies
Concierge	1	D.O.E/Seasonal	Varies	F&B/Sky View Restaurant	# of Positions	Pay Rate	Shift
Swamper Packer	1	D.O.E/Seasonal	Varies	Supervisor	1	D.O.E/FT	Varies
On River Supervisor	1	D.O.E/PT	Varies	Server	1	D.O.E/FT	Wed-Sat
GCRC INTENAL ONLY UNTIL 10/02/2023				Cashier	1	D.O.E/Seasonal	Sun- Tues
Inventory Control Specialist -Procurement	1	D.O.E/FT	Varies	Food Handler/Cook	1	D.O.E/FT	Wed-Sat
Food Handler/Cook - Food & Beverage	5	D.O.E/FT	Varies	Operations Manager	1	D.O.E/FT	Varies
				Cashier	2	D.O.E/FT	Wed-Sat
				Janitorial	# of Positions	Pay Rate	Shift
				Lead Janitor	1	D.O.E/FT	Varies
				Janitor	2	D.O. E/PT	Sun-Tues
				Supervisor	1	D.O.E/FT	Wed-Sat
				Janitor	1	D.O. E/FT	Sun-Wed
				Maintenance	# of Positions	Pay Rate	Shift
				Maintenance Tech	2	D.O.E/FT	Wed-Sat
				Maintenance Tech	1	D.O.E/PT	Varies
				Waterline Tech	1	D.O.E/FT	Varies
				Carpenter	1	D.O.E/FT	Varies
				Electrician	1	D.O.E/FT	Varies
				Operations Manager	1	D.O.E/FT	Varies

EDUCATION & TRAINING

Hualapai Day Care ♦ PY 20 Media Release Non-Pricing Programs

Submitted by: Chira Walema | Hualapai Day Care



Media Release for Non-Pricing Programs

Sponsoring Organization's Name Hualapai Tribe- Day Care

Street Address 475 Hualapai Way City Peach Springs Zip Code 86434

Contact Person Chira Walema Phone Number 928-769-1515

Media Outlet(s) Contacted Gamyu- Community Paper Date 09/14/2023

Note: Emergency shelters and at-risk-only programs should omit references to income prior to sending to media outlets.

Please print the following media release as a free public service announcement.

Today Hualapai Tribe- Day Care announced its sponsorship of the U.S. Department of Agriculture (USDA) Child and Adult Care Food Program administered by the Arizona Department of Education, Community Nutrition Programs. Meals will be made available to enrolled participants at no separate charge without regard to race, color, national origin, sex, age, or disability. Household income determines the amount of money institutions will be reimbursed to provide meals to enrolled participants. The income-eligibility guidelines listed below are used to determine the amount of reimbursement.

Household Size	FREE			REDUCED-PRICE		
	Yearly Income	Monthly Income	Weekly Income	Yearly Income	Monthly Income	Weekly Income
1	\$18,954	\$1,580	\$365	\$26,973	\$2,248	\$519
2	\$25,636	\$2,137	\$493	\$36,482	\$3,041	\$702
3	\$32,318	\$2,694	\$622	\$45,991	\$3,833	\$885
4	\$39,000	\$3,250	\$750	\$55,500	\$4,625	\$1,068
5	\$45,682	\$3,807	\$879	\$65,009	\$5,418	\$1,251
6	\$52,364	\$4,364	\$1,007	\$74,518	\$6,210	\$1,434
7	\$59,046	\$4,921	\$1,136	\$84,027	\$7,003	\$1,616
8	\$65,728	\$5,478	\$1,264	\$93,536	\$7,795	\$1,799
Each additional person:	\$6,682	\$557	\$129	\$9,509	\$793	\$183

In accordance with federal civil rights law and U.S. Department of Agriculture (USDA) civil rights regulations and policies, this institution is prohibited from discriminating on the basis of race, color, national origin, sex (including gender identity and sexual orientation), disability, age, or reprisal or retaliation for prior civil rights activity.

Program information may be made available in languages other than English. Persons with disabilities who require alternative means of communication to obtain program information (e.g., Braille, large print, audiotope, American Sign Language), should contact the responsible state or local agency that administers the program or USDA's TARGET Center at (202) 720-2600 (voice and TTY) or contact USDA through the Federal Relay Service at (800) 877-8339.

To file a program discrimination complaint, a Complainant should complete a Form AD-3027, USDA Program Discrimination Complaint Form which can be obtained online at: <https://www.usda.gov/sites/default/files/documents/USDA-OASCR%20P-Complaint-Form-0508-0002-508-11-28-17Fax2Mail.pdf>, from any USDA office, by calling (866) 632-9992, or by writing a letter addressed to USDA. The letter must contain the complainant's name, address, telephone number, and a written description of the alleged discriminatory action in sufficient detail to inform the Assistant Secretary for Civil Rights (ASCR) about the nature and date of an alleged civil rights violation. The completed AD-3027 form or letter must be submitted to USDA by: (1) mail: U.S. Department of Agriculture Office of the Assistant Secretary for Civil Rights 1400 Independence Avenue, SW, Washington, D.C. 20250-9410; (2) fax: (833) 256-1665; or (202) 690-7422; (3) email: program.intake@usda.gov. This institution is an equal opportunity provider.

Meals will be provided at the site(s) listed below:

Site Name: Hualapai Day Care

Site Name: _____

Site Address: 475 Hualapai Way

Site Address: _____

City, Zip Code: Peach Springs 86434

City, Zip Code: _____

Phone Number: (928) 769-1515

Phone Number: _____

Multi-Site Sponsors: Complete one form and attach a list of the names, addresses, and contact numbers for all operating sites.

GIRLS VOLLEYBALL SCHEDULE 2023-24

Remaining Games for the Music Mountain Warriors

- October 5 @ Grand Canyon / JV @ 4 pm / Varsity @ 5pm
- October 7 @ Red Mesa, AZ / JV @ 12 pm / Varsity @ 1 pm (1 hour ahead)
- October 9 @ Ash Fork, AZ / JV @ 5pm / Varsity @ 6pm
- October 11 @ San Pasqual, CA, AZ / 5pm
- **October 16 @ Music Mountain - Seligman / JV @ 3pm / Varsity @ 4pm**
- October 25 @ Holbrook Indian School, AZ / JV @ 6pm



HEALTH & SAFETY INFORMATION

Hualapai SDPI ♦ Walk.O.Ween (October 1st - October 31st)

Submitted by: Cotton Koyayesva | Hualapai HSDPI

A festive poster for the Walk.O.Ween challenge. At the top, there's a string of colorful triangular bunting flags in orange, pink, and yellow. The title 'WALK.O.WEEN' is written in large, bold, orange letters. Below it, the text 'Let's scare up some walking/running miles for our health!' is in a white, slightly gothic font. The main body of text is in yellow and white, providing details about the challenge: tracking miles from October 1st to 31st, using a circle at the Fitness Center or on your own, and rewards for completing 100+ miles (grand incentive) and 75+ miles (long sleeve shirt). It also mentions the need for proof of miles via a walking/running app or treadmill/elliptical pictures, and provides the email Cotton.Koyayesva@hualapai-nsn.gov. At the bottom, there's a sign-up deadline of September 25th and a contact number 769-1630. The bottom of the poster is decorated with various Halloween-themed icons: ghosts, pumpkins, a witch's hat, a skull, and candy. In the center, there's a logo for Hualapai SDPI featuring two silhouettes of people walking inside a green circle with the text 'HUALAPAI SDPI' around it.

WALK.O.WEEN

Let's scare up some walking/running miles for our health!

No tricks here, track your miles from October 1st– October 31st. You may utilize the circle, equipment at the Fitness Center. Also walking/running on your own. All who complete 100+ Miles at the end of this challenge will receive a grand incentive. Those who reach 75+ miles will receive a long sleeve shirt.

Proof of miles completed will need to be submitted. Take a picture/screen shot of miles done by using a walking/running app you have on your phone. A picture of the miles completed on the treadmill/elliptical. Pictures are needed to confirm miles given. Send proof of miles to Cotton.Koyayesva@hualapai-nsn.gov

Sign ups begin September 25th.
Challenge starts October 1st.

HUALAPAI SDPI

To sign up/ get more information
give Cotton a call @769-1630

Hualapai SDPI Fitness



6 WEEK FALL SLIM DOWN WEIGHT LOSS CHALLENGE

SIGN UPS: 9/25 - 9/30, 2023

Register and weigh-in at the *HSDPI FITNESS CENTER
950 RODEO CIRCLE (BEHIND THE GYM)
\$10.00 buy-in Winner take ALL!

***workout plans *nutrition education *health info**

Challenge Begins: SEPT. 25TH – 30TH, 2023

Challenge ENDS: NOV. 3RD, 2023

(Final Weigh in)

If you have any questions, Call us at 769-2644

**ARE YOU UP FOR
THE CHALLENGE?**



This event is sponsored by the Hualapai Special Diabetes Program
950 Rodeo Circle, Peach Springs, AZ 86434; Email: hualapaisdpi@gmail.com

ARE YOU READY FOR WINTER?

Limited
to
20 sign up
Criteria:

- 55 Yrs or older
- Must have a unpaid caregiver
- Living on a fixed income
- Homeowner



**55 YEARS AND OLDER
HAVE TO BE HOMEOWNERS**

**CHIMNEY PIPE CLEANING
WINTER PREP**

**CALL ANTONIA COGBURN AT THE HUALAPAI SENIOR
SERVICES CENTER (928)769-2375 EXT 193.**

YOU HAVE TO HAVE YOUR INTAKE UPDATED.

DEADLINE TO SIGN UP IS WEDNESDAY, OCTOBER 4, 2023.

9/27/23 ATC

Say Boo To The Flu ✦ Thursday, October 12th - Friday, October 13th

Submitted by: IT Support | Hualapai Tribe

PROTECT YOU AND YOUR LOVED ONES THIS SEASON
AND

SAY BOO TO THE FLU
FLU[@]POO



OCT 12TH AND 13TH

9AM TO 2PM

AT THE TRIBAL GYM

GAMES, PRIZES AND TREAT BAGS FOR THE
CHILDREN!

Chair Volleyball Halloween Costume Tournament ♦ Saturday, October 21st
Submitted by: Omaovensí Coochwyetewa | Hualapai Tribal Recreation



Chair Volleyball
HALLOWEEN
COSTUME Tournament

SATURDAY OCTOBER 21, 2023
HUALAPAI TRIBAL GYM
930 RODEO WAY, PEACH SPRINGS, AZ

10 TEAM LIMIT - 6 PLAYER ROSTER - 16 YRS & OLDER
Registration Deadline Monday October 16 @ 5:00pm

CALL 928 769 2652 FOR MORE INFORMATION

CAR SEAT CHECK EVENT

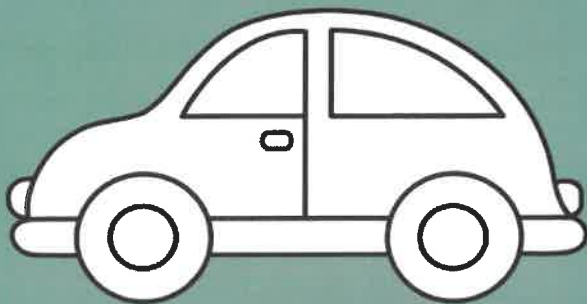
WHEN

October 26th, 2023
2:00 PM-4:00 PM

WHERE

**Hualapai Head
Start Center**

475 Hualapai Drive, Peach Springs, AZ 86434



EVENT DETAILS

Drive-thru style event
No registration required

WHAT TO EXPECT

One-on-one check-in
with a certified Child
Passenger Safety
Technician

Car seat installation and
adjustment tips

Free car seats for
eligible participants

Educational materials
provided

HOSTED BY

Hualapai Health,
Education, and Wellness

+

Hualapai Nation Police
Department

+

Indian Health Service
Office of Environmental
Health and Engineering

Questions?

Contact Devin Temple
Devin.temple@ihs.gov or
928-669-3179



Hualapai Fire and EMS Smoke Alarm Program

Hualapai Fire and EMS is now providing FREE smoke alarms and installation service for all residents in the Peach Springs community. Please visit Station 141 on 921 Hualapai Way Peach Springs, AZ to fill out a smoke alarm form or scan the QR code below.



Did You Know?



Smoke alarms should be tested monthly and replaced every 10 years



Smoke alarm batteries should be replaced every year



When a smoke alarm sounds, get outside and stay outside



Non-Emergency
(928) 769-2656

Emergency
911

Hualapai WIC Office 928-769-2207

**All appointments are done over the phone,
until August 31, 2023
please call to schedule your appointment.**

What is WIC?

WIC is a nutrition program that helps families feed their children healthy foods. WIC provides nutrition information, healthy foods, and help accessing health care to moderate to low-income families. The program is available to families with pregnant women, new mothers, and children under the age of five.

What Can WIC Offer My Family?

Benefits that can be used at the grocery store to buy healthy foods like milk, yogurt, whole grains, beans, juice, eggs, cheese, cereal, peanut butter and fruit and vegetables. Information about nutrition and health to help you and your family eat well and be healthy. Help with breastfeeding your baby, Help in finding health care and other community services, and Breast pumps to help you breastfeed even when you return to work

Can My Family Enroll In WIC?

WIC is for all kinds of families – families with married or single parents and those who are working or not working. WIC has different requirements than SNAP (Food Stamps) so even if you don't qualify for SNAP, you may still qualify for WIC. If you are a father, mother, grandparent, foster parent or other legal guardian of a child under 5 years of age, you can apply for your child.

If you are a woman who is pregnant, breastfeeding, or has a baby up to six months old, you can apply

REQUIRED Documents:

1. Identification for all clients
2. Proof of residency
3. Proof of income
4. Proof of pregnancy (if applicable)

Examples of proof of identification are:

Driver's License or state issued identification card
Birth certificate
Immunization record
Tribal enrollment card
Social security card
AHCCCS card
Hospital card for newborn baby

Examples of proof of residency are:

Utility bill
Rent/lease agreement
Tribal enrollment card (if address is on card)
If you are pregnant, you may count your unborn child as a family member.

Examples of proof of income are:

Current pay stub including the pay time frame
Most recent year's income tax return
Letter from employer stating your current pay
Tribal per capita check stub.
TANF benefit letter
Social security/DES benefit letter or check stub
* You are automatically income eligible for WIC services if you currently receive TANF, SNAP (Food Stamps) or Medicaid (AHCCCS).

This institution is an equal opportunity provider.

Hualapai WIC Office

Hualapai Education Health & Wellness
PO Box 397
488 Hualapai Way
Peach Springs, AZ 86434
ISSUE #20

Phone: 928-769-2207
Email: WEmail@hualapai-nsn.gov

REVISED: 07/21/2023



ITCA WIC New Foods - October 2023!

Unless no longer available, all foods in the previous food list are still allowable.

MILK New additions!

Organic Milk

ADDED

- Organic milk in the gallon size only



Kefir New!

ADDED

- Lifeway Kefir 32 oz. containers, any flavor in all milk fat varieties



EGGS Added more options!

ADDED

- Organic, free range, and cage free



CHEESE Added more options!

ADDED

- sliced cheese
- 8 oz package now allowable



YOGURT Now available in single serving cups and 24 oz. containers!

Nonfat and Low-Fat Yogurt - Added brands, sizes and organic options

ADDED PRODUCTS 24 OZ. - 32 OZ. CONTAINER

- Dannon Oikos Pro
- Good & Gather
- LaLa
- O Organics
- Simple Truth Organic
- Stonyfield Organic

ADDED

- Stonyfield Organic Kids 2 oz. - 8 packs
- Stonyfield Organic Kids 4 oz. - 6 packs

ADDED PRODUCTS 5.3 OZ. - 6 OZ. INDIVIDUAL CUPS OR 4 PACKS

- Food Club
- Great Value
- Kroger
- Lucerne
- O Organics
- Open Nature
- Tillamook Good and Creamy
- WinCo
- Yoplait Original and light

ADDED PRODUCTS 5.3 OZ. INDIVIDUAL CUPS AND 4-PACKS

- Chobani Zero Sugar
- Dannon Light and Fit Greek
- Dannon Light and Fit Original
- Dannon Oikos Blended
- Dannon Oikos Pro
- Dannon Oikos Triple Zero



Whole Milk Yogurt - Added brands, sizes and organic options

ADDED PRODUCTS 24 OZ. - 32 OZ. CONTAINER

- Good & Gather
- Great Value
- O Organics
- Simple Truth Organic
- Stonyfield Organic

ADDED PRODUCTS 5.3 OZ. - 6 OZ. INDIVIDUAL CUPS OR 4 PACKS

- Dannon Oikos Traditional
- Food Club
- WinCo

ADDED PRODUCTS

- Noosa 8 oz. tubs
- Stonyfield Organic Kids 4 oz. - 6 pks & 2oz. - 8 pks
- Yoplait Oui - 5 oz. individual containers
- Yoplait Oui - 5 oz. - 4 pack

Yogurt Packs

More brands
More sizes



CEREAL New! 9 oz. is now the smallest allowable size for cold and hot cereal.

Cold Cereal

THE FOLLOWING CEREALS ARE NOW ALLOWABLE

- Great Value toasted oats
- Cheerios with strawberries
- Chex cinnamon
- Crispix
- Fiber One honey clusters
- Malt-O-Meal mini spooners strawberries and cream
- Frosted Mini Wheats little bites blueberry, chocolate, cinnamon roll, and strawberry
- Great Grains crunchy pecan
- Honey Bunches of Oats cinnamon bunches, maple and pecans, and vanilla
- Kashi Hearts & O's honey toasted and warm cinnamon
- Special K Protein touch of cinnamon
- Wheaties



Hot Cereal

THE FOLLOWING CEREALS ARE NOW ALLOWABLE

- Food Club Instant Grits original and instant oatmeal original in individual packets
- Great Value instant oatmeal original in individual packets
- Essential Everyday instant oatmeal original individual packets
- Kroger instant oatmeal original individual packets
- Signature Select instant oatmeal original individual packets
- Malt-O-Meal original, chocolate, and coco wheat
- Quaker instant grits original and butter



FRUITS AND VEGETABLES New items allowed!

Canned Fruits and Vegetables Now Allowed!

ADDED

- Canned fruit
- Canned vegetables



Fresh Vegetables Herbs now allowed!

ADDED

- Bay leaves, basil, cilantro, chives, dill, ginger, mint, oregano, parsley, rosemary, sage, thyme



FISH Added flavors and pouches

ADDED

- Chunk light tuna and pink salmon, can now be flavored and is allowed to be in a pouch



WHOLE GRAINS New Bread! Plus new sizes!

Whole Grain Bread

ADDED BRANDS

- Orowheat 100% whole wheat hot dog buns, whole wheat hamburger buns, whole wheat sandwich thins, and Orowheat multigrain sandwich thins



Barley New!

ADDED

- Any brand of barley (instant, quick, boil-in-bag, or regular cooking) up to 16 oz. size is now allowable



INFANT FOODS Added stage, size, and brand

Infant Fruits and Vegetables

ADDED

- Stage 1
- 2 oz. size container
- Simple Truth Organic brand





New food options coming in October!

You can buy these new options with October benefits.

Options include:



Cheese
- Sliced
- 8 oz



**Cage Free
and Organic
Eggs**



Herbs



**Canned
Fruit & Veggies**



**Single Serving
Yogurts**

This institution is an equal opportunity provider.

COMMUNITY MESSAGES

Inspirational & Encouragement Corner

Submitted by: Josie Powsey | Hualapai Elder

Gam yu je!

Prayer...

Heavenly Father,

Please grant rest to our minds and soul.
Life has been extremely hard and difficult
for many as we find peace and hope,
please fill our hearts with faith. Amen.

Your mind will feast on
whatever you feed it.

Feed it hope, feed it God's truth
and promises. Feed it things that uplift,
encourage, inspire and bring peace!

7 Messages from God

1. You will prosper
2. You will smile again
3. Your storm is over
4. You will find peace
5. You are forgiven
6. You are safe with me!
7. You are LOVED!

Amen!

Bajeh—Take care of yourselves. Look to God for guidance, encouragement and strength, and love in your hearts. Now is the Day of Salvation.

Satisfied life is better than successful life.
Because our success is measured by others.
But our satisfaction is measured
by our own soul, mind and heart.

As long as you stay closer to God.
Your relationship, career, and whatever
you do, will work out, but perfectly.

Stand in faith!
Even when you're having the hardest time in your life!

(Here's an eye opener one!)

This summer heat made me realize that I won't survive in
hell! I have to change!! What about you!!

Mah han kyu!

Gamyu Newsletter: Deadline & Publication Dates

Article submissions are on a bi-weekly deadline scheduled on FRIDAY (the week before tribal pay week) by 5:00 p.m. If a deadline falls on a holiday or Administrative Leave, articles will be accepted the following Monday by 12:00 Noon (unless specified).

Please remember to attach an Information Sheet with your hand delivered articles. For your convenience, article submissions are accepted via email, please send to: Danielle.Bravo@hualapai-nsn.gov. Absolutely, no ANONYMOUS submissions will be accepted.

Current and archived newsletters are available on the tribal website under "Community" at: www.hualapai-nsn.gov.

Article Deadlines:

Friday, October 6th

Friday, October 20th

Publication Dates:

Friday, October 13th

Friday, October 27th

KWLP 100.9 FM - The Peach ✦ Redeemed & Free

Submitted by: Terri Hutchens | KWLP 100.9FM - The Peach

KWLP 100.9 fm presents:

redeemed + free

GOSPEL HOUR

hosted by: "Pastor Steve"

Wednesday evenings at 6:00 pm

Sunday mornings at 9:00 am

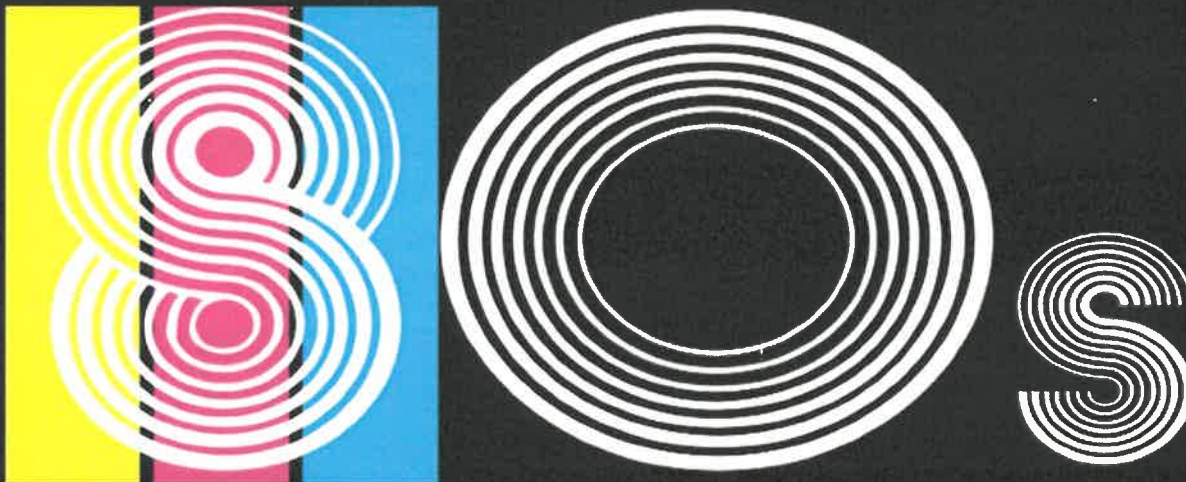
Now sponsored by
The Hackberry Store



Hackberry General Store

AW

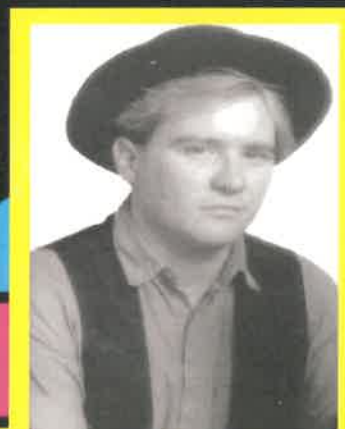
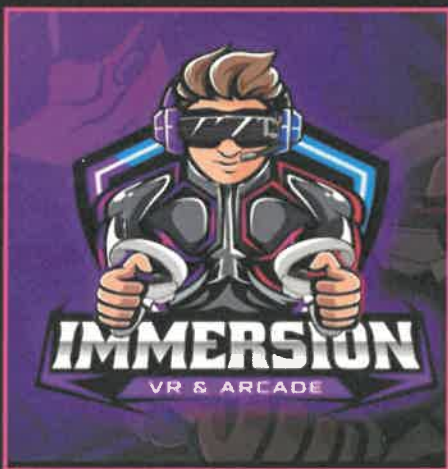
KWLP 100.9



Just can't get enough

Sponsored by:
IMMERSION VR
& ARCADE

Every Tuesday
At 6:00 PM



YOUR HOST: TAURIS

kwlpradio.com

WE LOVE OUR VOLUNTEERS



The Hualapai Nation's Live and Local Radio Station
Proudly Announces and Congratulates
August 2023 Volunteer of the Month
Loretta Longley Warnick



Loretta is the newest member of The Peach volunteer crew! She has jumped in with both feet and is running full steam ahead! She is an example of how you can be part of KWLP without going on the air! (so far....) She has helped us with data entry, organizing inventory and preparing for and hosting our National Radio Day open house on August 18, 2023. She's given us several of her lunch breaks, shared part of her evenings and even taken leave to participate to the fullest. And man-oh-man, she is a go-getter and a lot of fun! We are so excited she has brought her enthusiasm to the radio station! Monthly meetings are going to be lively!

Loretta will receive incentives valued at approximately \$150.00 for being Volunteer of the Month. She'll also be eligible to be Volunteer of the Year! If you might be interested in volunteering call us at (928) 769-1110.

KWLP August 2023 Volunteer of the Month is sponsored in part by:



WE LOVE OUR VOLUNTEERS



KWLP, "The Peach"
Proudly Announces and Congratulates
September 2023 Volunteer of the Month:
Steve DeFord, aka Pastor Steve



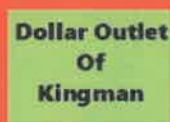
Steve DeFord, aka Pastor Steve, continues to be an invaluable Peach team member. He hosts one of the longest running shows on KWLP, "Redeemed and Free," which is listened to by many on Wednesday evenings at 6:00pm and rebroadcast Sunday mornings at 10:00am! "Redeemed and free is now graciously sponsored by The Hackberry General Store!

Steve is Pastor at the Hualapai Baptist Highway Church. Pastor Steve shares scripture and features southern gospel music. The show begins with the segment "The Truth with Ms. Sherry," hosted by Pastor Steve's wife. Keeping it in the family: Steve's brother Jeff shares his nationally syndicated bluegrass radio show: "Down to the Roots," with Peach listeners immediately follows Steve's show at 7:00pm Wednesday evenings.

Steve impresses staff and listeners alike with his professionalism and preparation for his show! When able, Steve helps at station events, solicits and supports advertisers and personally contributes regularly to listener give aways. He has also recently joined the KWLP Advisory Committee. We truly appreciate all he does with and for KWLP and the community!

Pastor Steve will receive incentives valued at \$100 for being Volunteer of the Month and be eligible to be Volunteer of the Year! If you might be interested in volunteering, call at (928) 769-1110.

This month, Volunteer of the Month is sponsored in part by:



KWLP wants to send out a big HANK 'YU to these local businesses for their support of The Peach during August 2023!

These local businesses supported KWLP and the community listeners by sponsoring shows, purchasing ads, providing gift cards and making other donations for KWLP's LISTEN TO WIN giveaways and volunteer participation incentives!



- Some of these businesses are giving discounts to customers who mention hearing their ad on KWLP!
- Stop by these businesses and get the benefits when you can and please thank them for supporting your live and local station!
- Be sure to listen to 100.9 fm for details about these promotions!



kwlpradio.com





Ways to Volunteer and be a part of YOUR local at Radio Station (and earn great incentives!:

- **Set up a regular, periodic or special show: BE A DJ!!!**
- **Voice recordings for public service announcements**
- **Screen Music**
- **Learn Production to back-up/assist staff**
- **Learn station studio operations to back up/assist staff**
- **Learn technical equipment operations and back-up/assist staff**
- **Make Language and Culture Contributions**
- **Assist with Website management-data entry of community events/concert schedules**
- **Search sound clouds and internet for free or low cost native programming and artists**
- **Janitorial and Yard work**

We are currently looking for persons interested in being DJs for these time slots and music genres/talk segments:

- **Country : Wednesday 5pm and 9pm**
- **Oldies/R&B or Soul : Monday : 9pm;**
- **Gospel/Spiritual: Sunday 8 am and 9 am;**
- **Native Sports and Language and Culture; various**
- **Top 40 and Urban: Tuesday evenings**
- **Rock: Friday evenings several slots**
- **General Variety: most Saturday time slots**
-

Note: most shows and segments can be recorded/produced at any time, regardless of when they are on the air, and we can train you to do it from home!

Call for more information (928) 769-1110

WILDGRAPE JELLY



Hualapai Name: I'je: qa

Time of Harvest: Late Summer (Sept. for Hualapai Mountains)

Environment/Habitat: Found along streams and canyons 2000 to 7500 ft.

Plant Preparation: Grapes can be made into juice or sun-dried and stored for later use.

Low-Sugar Recipe

2 ½ CUPS I'je:qa juice

1 package Sure-Jel

3 ½ CUPS Sugar

2 TBSP Lemon Juice

2 ½ Cups I'je:qa juice

1 package Low Sugar/No Sugar Sure Jel

2 Cups Stevia & 1 ½ cups Sugar

2 Tablespoons Lemon Juice

Direction:

Put Wildgrapes in a pot and cover them in water. Cook the grapes until they start to split, then cook a little longer until the juice and color of the berries start to saturate the water (dark purple). Strain the grapes until you have 2 ½ cups juice. Mix the juice with the Sure-Jel and bring to boil. Then add sugar, boil again for 1 minute. Immediately pour into sterilized jars and seal. To keep for longer shelf life, hot water bath canning method should be used 1000 ft.=5 minutes, add 1 minute for every 1000 ft. Yield about 10, 8 oz. jars.

**UNITED STATES DEPARTMENT OF THE INTERIOR
BUREAU OF INDIAN AFFAIRS**

HOUSING ASSISTANCE APPLICATION

GENERAL INSTRUCTIONS

This application is for the Housing Improvement Program (HIP) of the Bureau of Indian Affairs (BIA).

The HIP is a grant program that addresses the housing needs of those Indians who cannot qualify for housing assistance from any other source. It involves the repair and renovation of existing housing or the construction of a new unit. Individual Federally-recognized Indian tribe's participation is mandatory and their direct administration of the HIP is encouraged. The selection of eligible families or individuals for HIP services is done through a screening process by assigning points to specific ranking factors documented in the application.

Individuals wishing to apply for HIP assistance must complete this application and submit it to either their local BIA Agency office or designated Tribal HIP office, if operated under P.L. 93-638 contract or P.L. 103-413 Self-Governance compact.

PRIVACY ACT NOTICE: Pursuant to Section 3(e) (3) of the Privacy Act of 1975 (P.L. 93-579), individuals furnishing information on this application form are hereby advised:

1. The authority for solicitation of the information is 25 U. S. C. 13 and the Bureau of Indian Affairs HIP regulation at 25 CFR Part 256.
2. The information collected will be used to determine an applicant's eligibility and to set priority ranking for assistance under the HIP regulations.
3. The disclosure of this information is voluntary. Failure to provide the information required to support the verification process will result in the denial of the application. Incomplete applications will not be considered. The information provided in this application may be made available to authorized sources for verification purposes upon request.

USE OF SOCIAL SECURITY NUMBER: The disclosure of your Social Security Number is not required in the completion of this application.

CERTIFICATION: Certification is made with the knowledge that the information will be used to determine eligibility to receive housing assistance. Anyone who knowingly makes a false or fraudulent statement in this application is subject to the penalties provided by law (U.S. Code, Title 18, Section 1001).

If you need information regarding the conditions and terms under which housing assistance is provided to American Indians or Alaska Natives, you may obtain a copy of the HIP regulations (25 CFR Part 256) from your Tribe or nearest BIA Agency Office.

(Instructions – Page 1 of 3)

INSTRUCTIONS RELATING TO SPECIFIC ITEMS IN THE APPLICATION

PLEASE DETACH THESE INSTRUCTIONS BEFORE SUBMITTING YOUR HIP APPLICATION
PLEASE SUBMIT YOUR COMPLETED APPLICATION TO YOUR TRIBAL SERVICING HOUSING OFFICE

ITEM C - Income Information: Enter the total annual household income of all family members, including all earned and unearned income as defined in 25 CFR Part 20, Subpart C – Direct Assistance. The sections that are applicable to this application are: 20.307, 20.308, 20.309 and 20.310.

The following detailed definition of income is from the Bureau of Indian Affairs' Financial Assistance and Social Services Program Regulations, 25 CFR Part 20 Subpart C - Direct Assistance shall be applied to HIP applications.

(A) Resources. In determining eligibility..., the Bureau shall consider all types of income and other liquid assets available for support and maintenance unless... *or specifically excluded by Federal statute.* All earned or unearned income will be counted as income in the month received and as a resource thereafter, except certain income from the sale of real personal property as provided in Section 20.309(d). Resources are considered available when they are converted to cash.

Only adjustment or exclusion to income is in accordance with 25 U.S.C. 1408, Section 8, as amended, which provides that: "... and up to \$2,000 per year of income received by individual Indians that is derived from interests (trust or restricted lands) shall not be considered income..." Income from Indian gaming is not considered part of this statutory exclusion.

(1) "Earned income" is cash or any in-kind payment earned in the form of wages, salary, commissions, or profit from activities by an employee or self-employed individual. Earned income includes:

- (a) Any one-time payment to an individual for activities which were sustained over a period of time (for examples, the sale of farm crops, livestock or professional artists producing act work);
- (b) With regard to self-employment, total profit from business enterprise (i.e., gross receipts less expenses incurred in producing the goods and services). Business expenses do not include depreciation, personal business and entertainment expenses, personal transportation, capital equipment purchases, or principal payments on loans for capital assets or durable goods.

(2) "Unearned income" includes, but is not limited to:

- (a) Income from interest; oil and gas and other mineral royalties; gaming income per capita distributions; rental property; cash contributions, such as child support and alimony, gaming winnings; retirement benefits;
- (b) Annuities, veteran's disability, unemployment benefits, federal and state tax refunds;
- (c) Per capita payments not excluded by federal statute;
- (d) Income from sale of trust land and real or personal property that is set aside for reinvestment in trust land or a primary residence, but has not been reinvested in trust land or a primary residence at the end of one year from the date the income was received;
- (e) In-kind contributions providing shelter at no cost to the individual or household, this must equal the amount for shelter included in the state standard, or 25 percent of the state standard, whichever is less; and

(Instructions – Page 2 of 3)

- (f) Financial assistance provided by a state, tribal, county, local or other federal agency.

PLEASE DETACH THESE INSTRUCTIONS BEFORE SUBMITTING YOUR HIP APPLICATION
PLEASE SUBMIT YOUR COMPLETED APPLICATION TO YOUR TRIBAL SERVICING HOUSING OFFICE

(3) The Bureau shall prorate:

- (a) Recurring income received by individuals over a 12-month period for less than a full year's employment (for example, income earned by teachers who are not employed for a full year);
- (b) Income received by individuals employed on a contractual basis over the term of a contract; and
- (c) Intermittent income received quarterly, semiannually or yearly over the period covered by the income.

ITEM D - Housing Assistance: Housing assistance in the form of repairs to bring a housing unit to a standard condition is for the applicant(s) who are living in their own home. The applicant must sign a written agreement that if he/she sells the house within five years following the date of completion of the repairs, the full amount of the assistance must be repaid to the BIA at the time of settlement. [25 CFR Part 256.9(d)]

The applicant needing construction of a new standard house must have ownership of the land on which the house is to be built. In the case of a leasehold interest, it must be for not less than 25 years. The applicant must sign a written agreement that if he/she sells the house within the first ten years from the date of ownership, the grant is voided and the full amount of the HIP grant will be repaid to the BIA at the time of settlement. [25 CFR Part 256.10]

ITEM E - Land Information: Check the appropriate box to indicate the status of the land. The following are brief descriptions of types of land identified in the application:

Individual Trust	Land or any interest therein held in trust status by the United States for the benefit of an individual.
Tribal Trust	Land or any interest therein held in trust status by the United States for the benefit of an Indian Tribe.
Individually Restricted	Land or any interest therein, title to which is held by the individual Indian subject to Federal restriction against alienation, encumbrance, or taxation.
Tribally Restricted	Land owned by an Indian tribe with the Federal restrictions of alienation and encumbrances.
Tribally Fee Simple	Land owned by an Indian tribe free of any restriction
Fee Patented	Individual owned land where a patent has been issued which conveys an absolute or fee simple estate. The owner is entitled to the entire property with unconditional power to dispose.

(Instructions – Page 3 of 3)

PLEASE DETACH THESE INSTRUCTIONS BEFORE SUBMITTING YOUR HIP APPLICATION
PLEASE SUBMIT YOUR COMPLETED APPLICATION TO YOUR TRIBAL SERVICING HOUSING OFFICE

**UNITED STATES DEPARTMENT OF THE INTERIOR
BUREAU OF INDIAN AFFAIRS
HOUSING ASSISTANCE APPLICATION**

- All questions in this application must be answered. The requested information is self-explanatory.
- This application is subject to the Privacy Act of 1974, Pub. L. 93-579

A. APPLICANT INFORMATION

1. Name: _____
Last First MI Maiden Name (if any)
2. Current Address: _____
Street Address P.O. Box # (if any)
City State Zip Code
3. Telephone Number: (____) _____
4. Date of Birth: _____ 5. Social Security Number: _____
6. Tribe: _____ Roll Number: _____
Reservation/Rancheria: _____
7. Marital Status: ____ Married ____ Singled ____ Widowed ____ Other
If you checked "Other", please explain. _____
8. Are you Homeless? ____ No ____ Yes 9. Are you or spouse a Veteran? ____ No ____ Yes

Information About Spouse:

10. Name: _____
Last First MI Maiden Name (if any)
11. Date of Birth: _____ 12. Social Security Number: _____
13. Tribe: _____ Roll Number: _____

B. FAMILY INFORMATION

List all other persons living in household on a permanent basis. Start with the oldest and provide Name, Date of Birth, Social Security Number, Relationship to Applicant, and Tribe/Roll Number.

Name	Date of Birth	Social Security #	Relationship to Applicant	Tribe/Roll Number

If you need more space, use a blank sheet of paper.

Date of this application: _____

C. INCOME INFORMATION

14. Earned Income: Start with applicant; then list all permanent family members, including all who are listed under Parts A and B and have earned income. Provide signed copy of SF-1040 (income tax return), W-2 forms, wage stubs, etc. for verification.

Name	Annual Earned Income	Source of Income

Total annual earned income: \$ _____

15. Unearned Income: Start with applicant; then list all permanent family members, including all who are listed under Parts A and B and have unearned income such as social security, retirement, disability and unemployment benefits, child support and alimony, royalties, per capita payments, interest, etc. Provide check stubs, statements, individual Indian Money (IIM) ledgers, etc. for verification.

Name	Annual Unearned Income	Source of Income

Total annual unearned income: \$ _____

16. TOTAL COMBINED ANNUAL HOUSEHOLD INCOME (earned + unearned): \$ _____

D. HOUSING INFORMATION

17.	Location of the house to be repaired, renovated or constructed. (Give address and detailed directions to this house). **DRAW MAP ON BACK OF THIS PAGE**
18.	Provide a brief description of the problems you are experiencing with your house or the type of housing assistance for which you are applying.
19.	If repair assistance is needed, do you own _____ or rent _____ this house?
	If renting, is the owner Indian? _____ No _____ Yes
	If yes, provide name of owner(s):
20.	Are you living in Overcrowded Conditions? _____ No _____ Yes
21.	Is the condition of the home in a dilapidated state? _____ No _____ Yes

Date of this application: _____

HOUSING INFORMATION, continued.

22.	Is electricity available? <input type="checkbox"/> No <input type="checkbox"/> Yes If yes, provide name of electric company: _____													
23.	Type of Sewer system:	<input type="checkbox"/> City Sewer <input type="checkbox"/> Septic Tank <input type="checkbox"/> Chemical Toilet <input type="checkbox"/> Outhouse												
	Water Source:	<input type="checkbox"/> City Water <input type="checkbox"/> Private Well <input type="checkbox"/> Community Water Tank												
	Other (Please describe): _____													
24.	No. of Bedrooms _____													
25.	House Size: _____ (Square Feet)	LENGTH _____ ft/in WIDTH _____ ft/in												
26.	Bathroom facilities in existing house:	<table border="1"> <tr> <th>Facility</th> <th>Yes</th> <th>No</th> </tr> <tr> <td>Flush toilet</td> <td></td> <td></td> </tr> <tr> <td>Bathtub</td> <td></td> <td></td> </tr> <tr> <td>Sink/lavatory</td> <td></td> <td></td> </tr> </table>	Facility	Yes	No	Flush toilet			Bathtub			Sink/lavatory		
Facility	Yes	No												
Flush toilet														
Bathtub														
Sink/lavatory														

E. LAND INFORMATION

27.	Do you own the land on which you wish to renovate or build this home? <input type="checkbox"/> Yes <input type="checkbox"/> No										
	If no, can you provide proof that you can obtain land? <input type="checkbox"/> Yes <input type="checkbox"/> No										
	Provide the name of the owner(s): _____										
28.	What is the current status of the land?	<table border="1"> <tr> <td>Fee</td> <td>Tribal Fee</td> <td>Native/Restricted</td> </tr> <tr> <td>Individual trust land</td> <td>Tribal trust land</td> <td>Public Domain</td> </tr> <tr> <td>Individually restricted</td> <td>Tribally restricted</td> <td>Other:</td> </tr> </table>	Fee	Tribal Fee	Native/Restricted	Individual trust land	Tribal trust land	Public Domain	Individually restricted	Tribally restricted	Other:
Fee	Tribal Fee	Native/Restricted									
Individual trust land	Tribal trust land	Public Domain									
Individually restricted	Tribally restricted	Other:									
29.	If you do not own the land, do you have: _____ Leasehold interest? _____ Use permit? _____ Indefinite assignment or joint ownership? If so, please explain: _____										

F. GENERAL INFORMATION

		Yes	No
30.	Have you or anyone in your household ever received Housing Improvement Program assistance?		
	If yes, give amount received \$ _____; the year it was received: 19____; and the location of the house: _____		
31.	Do you own any other house not occupied by your family?		
	If yes, state where the house is located: _____ and who occupies it: _____		
32.	Do you live in a house built with Housing and Urban Development (HUD) funds?		
33.	Is the HUD project still under operation of an Indian Housing Authority?		
34.	Are you seeking Down Payment Assistance?		
	If yes, have you applied with USDA Rural Development or other lending institution? Please provide a copy of the credit letter.		
35.	If you are requesting assistance for a new housing unit, have you applied for assistance from:		
	• Indian Housing Authority? If yes, provide date of application: _____		
	• Tribal Credit Program? If yes, provide date of application: _____		
	• Other? From who: _____ If yes, provide date of application: _____		
36.	Does anyone in your family, who is a permanent resident listed under Parts A and B of this application, have a severe health problem, handicap or permanent disability?		
	If yes, provide name of family member _____ and brief description of condition. (Your servicing housing office will advise you if you must provide a statement of condition from one source, which may include a physician's certification, Social Security or Veterans Affairs determination, or similar determination).		

Date of this application: _____

G. APPLICANT CERTIFICATION

(Read this certification carefully before you sign and date your application. Sign in ink).

I certify that all the answers given are true, complete and correct to the best of my knowledge and belief, and they are made in good faith. This certification is made with the knowledge that the information will be used to determine eligibility to receive financial assistance, and that false or misleading statements may constitute a violation of 18 U.S.C. 1001.

This application contains material covered by the Privacy Act. No record will be communicated to anyone or any agency unless requested in writing, by the applicant, or unless an officer or employee of the housing program or other Federal agency requires it in the performance of their duties.

Applicant's Signature: _____

Date: _____

Spouse's Signature (if appropriate) _____

Date: _____

PRIVACY ACT STATEMENT

25 CFR 265 and 25 U.S.C. 13 authorize the collection of this information. This information is covered by the system of record notice "Indian Housing Improvement Program, Interior, BIA-10." The primary use of this information is to determine eligibility for assistance under the Housing Improvement Program. The records contained therein may only be disclosed in accordance with the routine uses and may not otherwise be disclosed by any means of communication to any person, or to another agency, except pursuant to a written request by, or with prior written consent of the individual to whom the record pertains. If the BIA uses the information furnished on this form for purposes other than those indicated above, it may provide you with an additional statement reflecting those purposes. Executive Order 9397 authorizes the collection of your Social Security number. Furnishing the information is voluntary but failure to do so may result in disapproval of your application.

PAPERWORK REDUCTION ACT STATEMENT

This information is being collected to select eligible families or individuals to participate in the Housing Improvement Program. Response to this request is required to obtain a benefit in accordance with 25 CFR 256. You are not required to respond to this collection of information unless it displays a currently valid OMB control number. This information will be used to determine the eligibility and the ranking of the applicant. Public reporting burden for this form is estimated to average 1 hour per response, including the time for reviewing instructions, gathering and maintaining data, and completing and reviewing the form. Direct comments regarding the burden estimate or any other aspect of this form to Information Collection Clearance Officer – Indian Affairs, 1849 C Street, NW, MS-4141; Washington, DC 20240.

Date of this application: _____