

Hualapai Planning & Economic Development Department and  
Hualapai Tribal Utility Authority

**Request for Proposal for  
Power Line, Substation and Other Engineering Design Services**

September 16, 2022

**ADDENDUM NO. 1**

**Attendees:**

Digioia Gray  
Power Engineers  
Kimley Horn Associates  
Outsource  
T&D Services  
EPS  
TOR

**Response to Questions**

Pre-submittal conference held via telephone on September 14, 2022, 2:00 PM to 3:00 PM

- 1. *Can the contract's time of performance be extended beyond March 5, 2023?*** The new contract period has been adjusted to start on December 1, 2022, and end on May 15, 2023. The RFP submittal deadline has also been extended to November 1, 2022.
- 2. *What is the time line to construct the power line?*** The power line may be completed in as little as nine months if the tribe hires a third-party contractor; however, if the tribe seeks to utilize HTUA staff to construct the line, the time frame may be as much as three years.
- 3. *If the engineer assumes the role of construction manager after the design is complete, what services is the tribe seeking outside of typical duties such as reviewing and approving the contractor's product submittals and pay applications, answering RFIs, evaluating change orders, etc?*** HTUA will provide its own on site inspector. Additional project management services include procurement as needed and management of the project on a day-to-day basis (project status reports, interfacing with the contractor and the HTUA's on site inspector).
- 4. *Is the engineer responsible for obtaining permits, NEPA approvals, etc?*** The tribe has completed an Environmental Assessment for both public and tribal lands (Technical Appendix 3) and received a ROW grant from BLM. Aside from obtaining authorization from the BLM when the tribe plans to issue its Notice to Proceed, no additional permits from the BLM are contemplated if the power line stays within the 100' right-of-way. For work on the Hualapai Reservation, a General Development Permit will be obtained by the construction contractor (or HTUA) when the final design is complete. The HTUA will act as the interface between the successful bidder and any regulatory agencies involved as needed.

5. ***In what jurisdiction(s) do the sub-station and lay-down areas reside?*** The sub-station and first lay-down area are on tribal land, with the second lay-down area being on public lands just east of Antares Road (see attached Exhibit D from Plan of Development).
6. ***Does they HTUA have a geotechnical standard to adhere to?*** Not at this time.
7. ***What is the preferred or minimum depth for the 20.8 KV feeder line between the new substation and the existing micro-grid switch on Diamond Bar Road?*** Ideally, a 48" trench depth can be obtained; however, the HTUA is open to a hybrid, value-engineered solution. Please note the feeder line must negotiate a new parking lot. See attached map for alternate path around parking lot and a second path, designed only for only the buried line option that follows Diamond Bar Road to Switch No. 1.
8. ***Is the solar array coming on line soon?*** No. The solar array is under design and construction and will not be on-line until late spring of 2023.
9. ***Does the proposal require adding the complete project management costs including staff lodging and the like?*** Project management costs should be added as one of the alternatives listed under Item 5 listed on pages 2 and 5 of the RFP and in the Cost Form.
10. ***Have there been significant alignment shifts in the power line since the 2020 RFP?*** Some four miles of the power line have been shifted off the original Taney Engineering. The exact distance of the new alignment can be determined by comparing the original survey maps (T2) with the GIS shapefile (T5).
11. ***Where will the fiber optic line terminate at Grand Canyon West?*** The new fiber optic line will terminate at Switch No. 1 on Diamond Bar Road where it will be spliced into the existing fiber optic line.

Additional Questions from e-mail submitted by interested bidders on September 14<sup>th</sup>

1. ***The RFP specifies a "contract period" running from November 15, 2022, to March 5, 2023. Are we right to assume that this is the time period allotted to complete all engineering activities up to and including the IFC drawings? If this is correct, can bidders propose alternate schedules?*** See above.
2. ***Can you clarify as to whether the "Other" tasks specified on Pages 4-5 of the RFP are required for the base bid and must be specified in our proposal?*** Other services are defined in the RFP and in this addendum. Additional questions regarding specific other services should be submitted in writing.
3. ***Is LiDAR data available for the entire transmission line route/corridor?*** No.
4. ***Will or has HTUA hire/hired an Owner's Engineer/firm to manage this project?*** HTUA will have a project manager assigned to project.

5. **What is the targeted Construction Start Date and anticipated duration and from that what is the level of engineering support requiring during the construction phase of the project (hours per week/level; in field oversight required, etc.) or will that be under a separate contract and not required for this bid?** Project start date is estimated for January 2024. Actual construction will begin after the material procurement process establishes when material will be available to commence said construction.
6. **For the construction cost estimate what is the level of accuracy desired (e.g., -10%/+20%, etc.)?** Plus or minus 10%.
7. **There were several questions and answers (Q&A) provided in the first round of this RFP back in May 2020. Are all of these Q&A still valid/appropriate for the current RFP?** No. If vendors have questions that may not have been answered in 2020, they should be resubmitted.
8. **Does HUTA/Hualapai Tribal Nation maintain a listing of qualified "Indian Enterprise" contractors that could be deployed as subcontractors for this effort (e.g., surveying, geotechnical lab and/or drilling, etc.)?** No.
9. **Does HUTA/Hualapai Tribal Nation have any preferences for the sourcing of any of the major assets slated for this project (including poles (wooden or steel), transformers, panels, wire, conductors, insulators, etc.)?** No. Items specified should be standard designs associated with prudent utility practices.

Should you have any questions regarding this Addendum, please contact me at (928) 769-1310.

Except as modified herein all other specifications, terms, conditions and special provisions shall remain the same.

ISSUED BY:



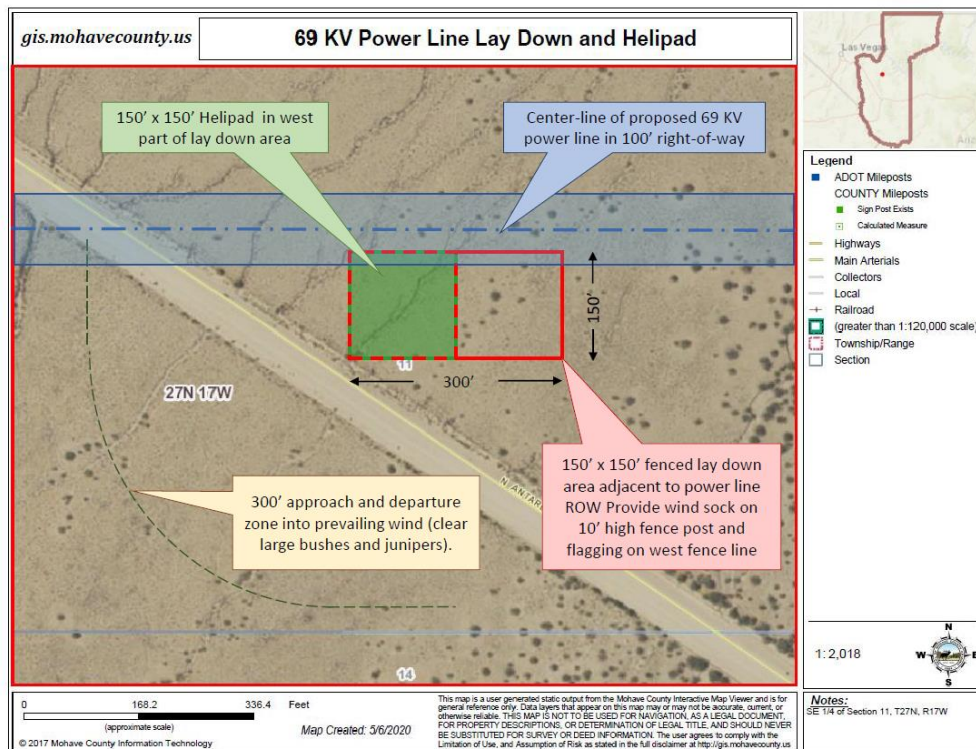
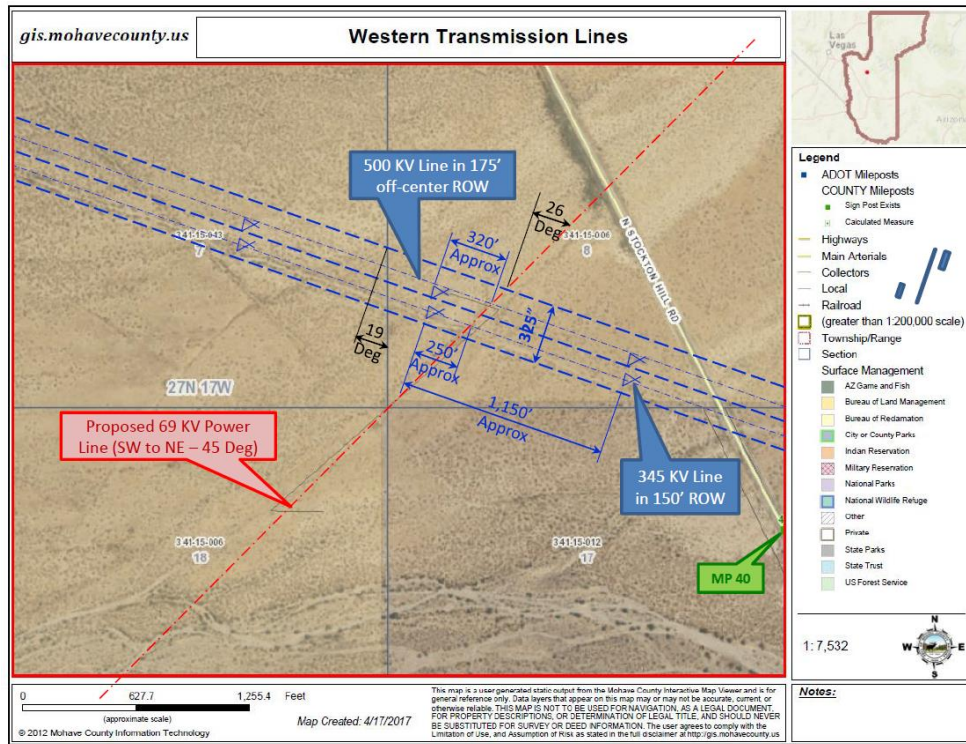
Kevin Davidson  
Planning Director

Attachment: Exhibit D from Plan of Development  
Alternate Route Map for 20.8 KV Feeder

cc: File

## Exhibit D from Plan of Development

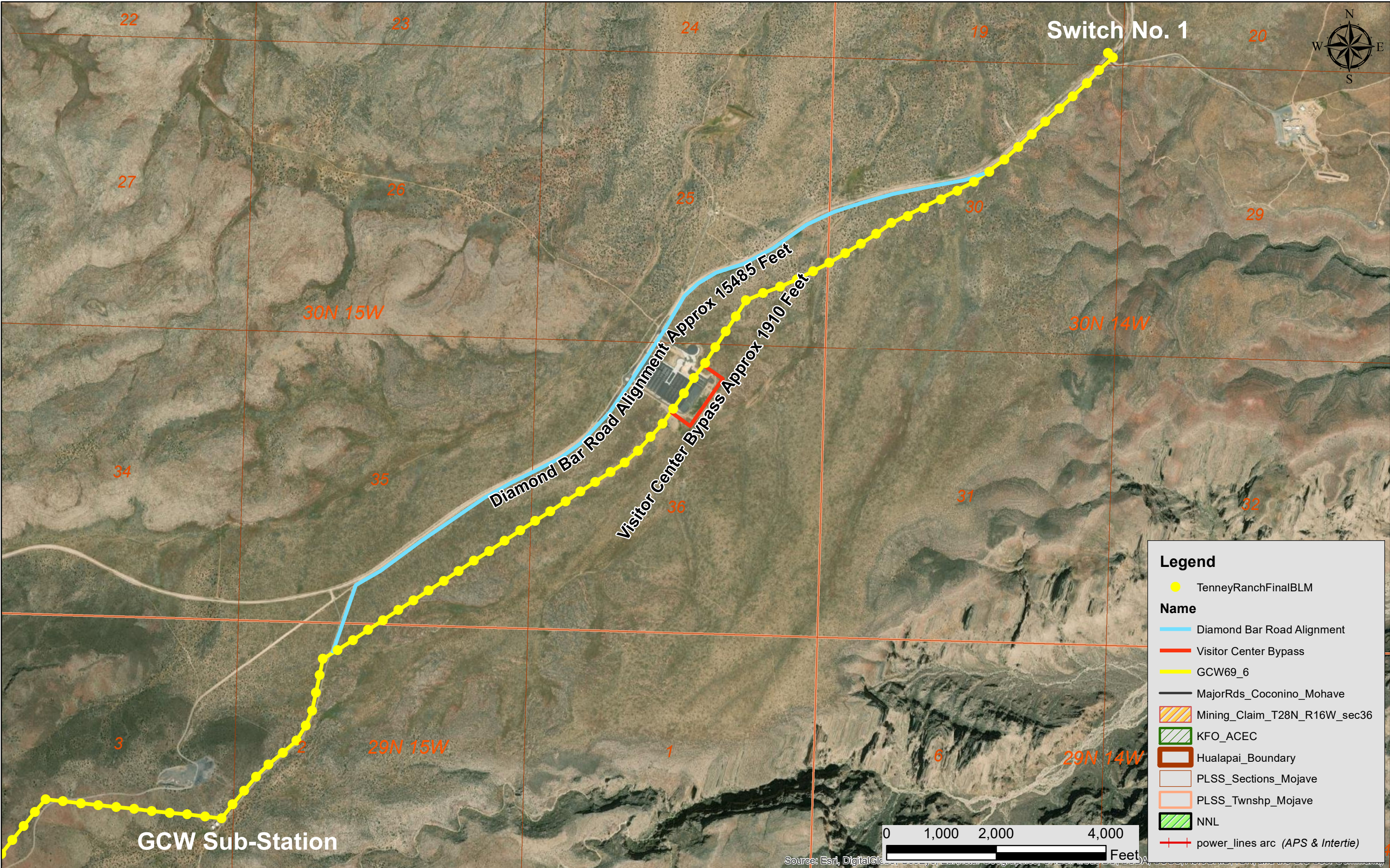
## Staging Areas and Proposed Substation for 69 kV line





# Alternate Route Map for 20.8 KV Feeder

# Alternate Alignments for 20.8 KV Feeder from Grand Canyon West Substation to Switch No. 1



**Legend**

- TenneyRanchFinalBLM
- Diamond Bar Road Alignment
- Visitor Center Bypass
- GCW69\_6
- MajorRds\_Coconino\_Mohave
- Mining\_Claim\_T28N\_R16W\_sec36
- KFO\_ACEC
- Hualapai\_Boundary
- PLSS\_Sections\_Mojave
- PLSS\_Twnshp\_Mojave
- NNL
- power\_lines arc (APS & Intertie)